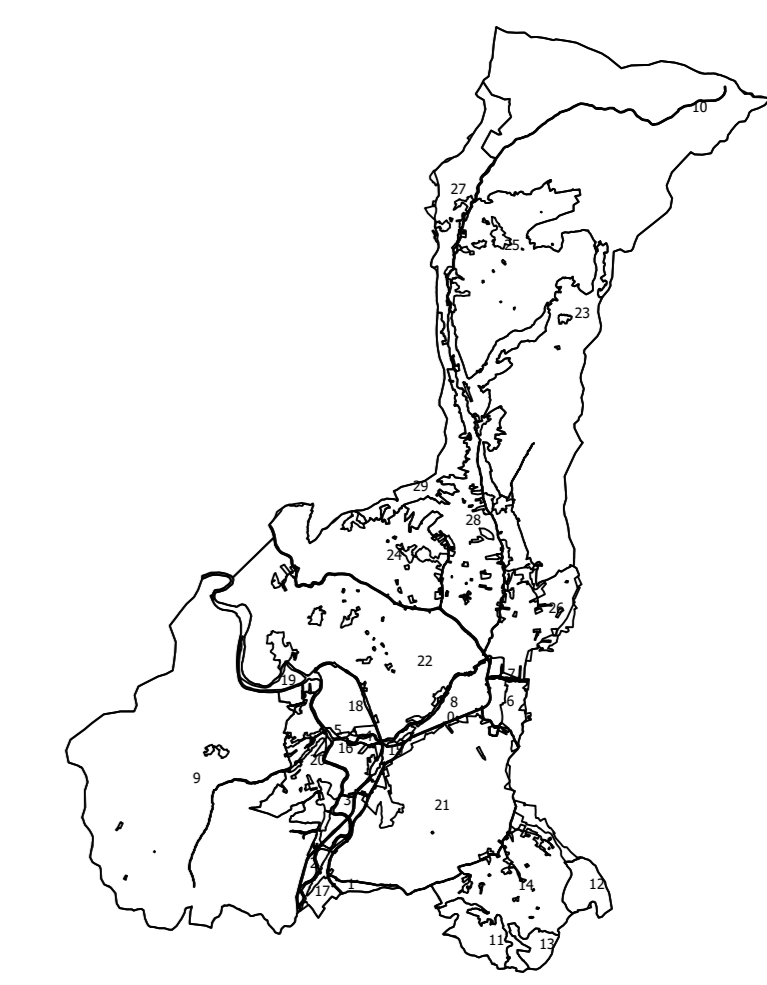


**PLAN CADASTRAL**  
**UAT: HALMAGIU**  
**Judet: ARAD**  
**Sectoare cadastrale:**  
**0, 14, 21**  
 Scara 1:1000  
 Sistem de proiectie STEREO 1970  
 Plansa 294



Schita cu dispunerea sectorului



Schema de dispunere a planselor

Plansa 278	Plansa 279	Plansa 280
Plansa 293	Plansa 294	Plansa 295
Plansa 308	Plansa 309	Plansa 310

**Legenda:**

<span style="color: green;">—</span>	Limita sector cadastral
<span style="background-color: yellow;">1</span>	Numar sector cadastral
<span style="background-color: lightgreen;">42</span>	Numar tarla
<span style="border-bottom: 1px solid black;"> </span>	Limita imobil
<span style="border-bottom: 1px dashed black;"> </span>	Limita constructie
894	ID imobil
<span style="border: 1px solid black; padding: 2px;"> </span>	Numar corp constructie
427	Numar postal
<span style="color: blue;">Parsu</span>	Toponimie
<span style="border-bottom: 1px solid red;"> </span>	Limita UAT si teritorii invecinate
<span style="border-bottom: 1px solid blue;"> </span>	Limita intravilan

Executant: Asocierea S.C. PROCAD S.R.L. -  
 S.C. GEOMATICS INTEGRATED SERVICES S.R.L.  
 Data: MAI 2023

Acest document a fost semnat electronic de catre Paul-Daniel DUMITRU,  
 reprezentant al S.C. GEOMATICS INTEGRATED SERVICES S.R.L.

Documente spre publicare

