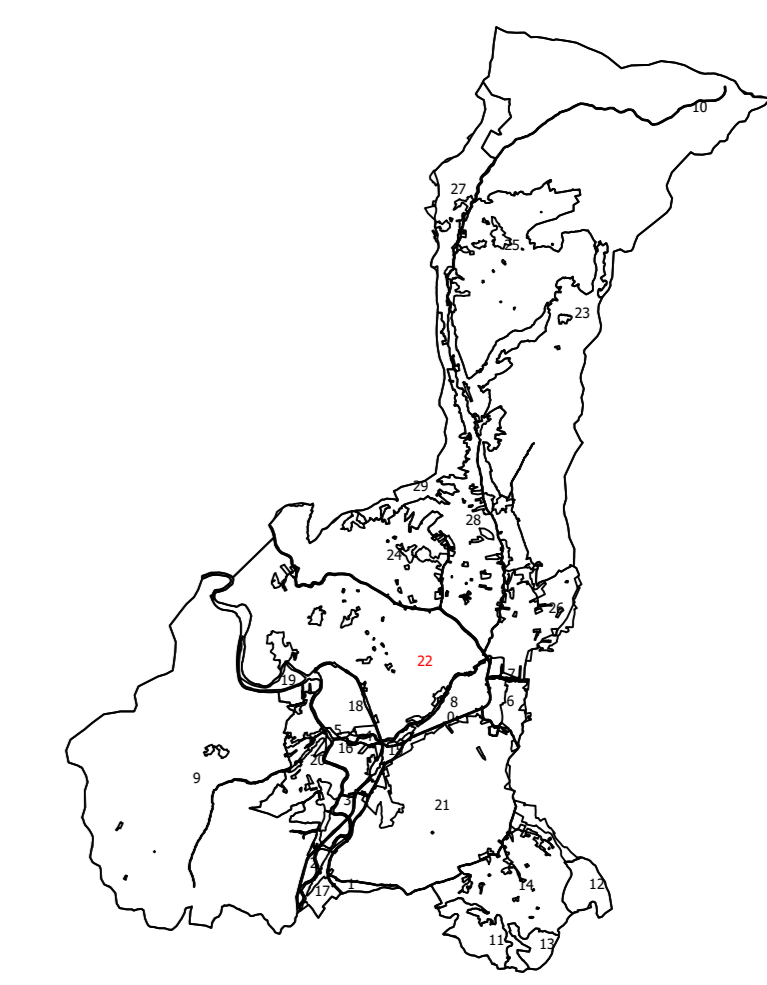


**PLAN CADASTRAL**  
**UAT: HALMAGIU**  
**Judet: ARAD**  
**Sectoare cadastrale:**  
**22**  
 Scara 1:1000  
 Sistem de proiectie STEREO 1970  
 Plansa 217



Schita cu dispunerea sectorului



Schema de dispunere a planselor

Plansa 201	Plansa 202	Plansa 203
Plansa 216	Plansa 217	Plansa 218
Plansa 231	Plansa 232	Plansa 233

**Legenda:**

<span style="border-bottom: 1px solid green; width: 20px; display: inline-block;"></span>	Limita sector cadastral
<span style="border: 1px solid yellow; width: 20px; display: inline-block;"></span>	Numar sector cadastral
<span style="border: 1px solid green; width: 20px; display: inline-block;"></span>	Numar tarla
<span style="border-bottom: 1px solid black; width: 20px; display: inline-block;"></span>	Limita imobil
<span style="border-bottom: 1px dashed black; width: 20px; display: inline-block;"></span>	Limita constructie
894	ID imobil
1	Numar corp constructie
427	Numar postal
<span style="color: blue;">Parsu</span>	Toponimie
<span style="border-bottom: 1px solid red; width: 20px; display: inline-block;"></span>	Limita UAT si teritorii invecinate
<span style="border-bottom: 1px solid blue; width: 20px; display: inline-block;"></span>	Limita intravilan

Executant: Asocierea S.C. PROCAD S.R.L. -  
 S.C. GEOMATICS INTEGRATED SERVICES S.R.L.  
 Data: MAI 2023

Acest document a fost semnat electronic de catre Paul-Daniel DUMITRU,  
 reprezentant al S.C. GEOMATICS INTEGRATED SERVICES S.R.L

Documente spre publicare

