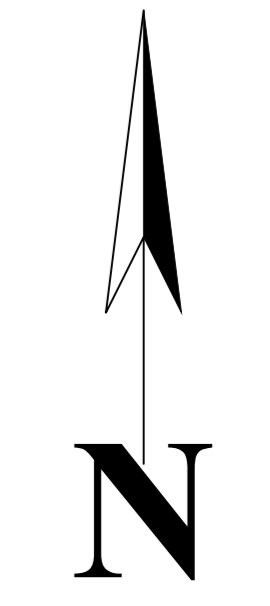
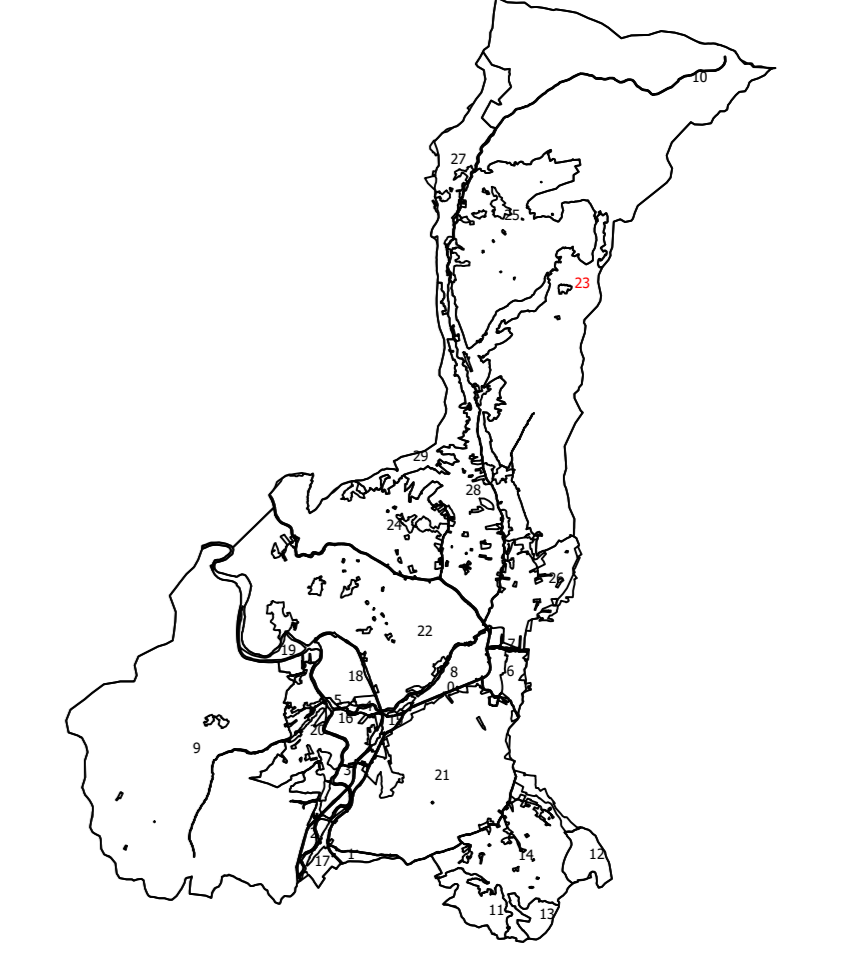


**PLAN CADASTRAL**  
 UAT: HALMAGIU  
 Judet: ARAD  
 Sectoare cadastrale:  
**23**  
 Scara 1:2000  
 Sistem de proiectie STEREO 1970  
 Plansa 38



Schita cu dispunerea sectorului



Schema de dispunere a planselor

Plansa 29	Plansa 30	Plansa 31
Plansa 37	Plansa 38	Plansa 39
Plansa 45	Plansa 46	Plansa 47

**Legenda:**

<span style="color: green;">—</span>	Limita sector cadastral
<span style="background-color: yellow; border: 1px solid black; border-radius: 50%; padding: 2px;">1</span>	Numar sector cadastral
<span style="background-color: green; border: 1px solid black; border-radius: 50%; padding: 2px;">42</span>	Numar tarla
<span style="border-bottom: 1px solid black; width: 20px; display: inline-block;"></span>	Limita imobil
<span style="border-bottom: 1px dashed black; width: 20px; display: inline-block;"></span>	Limita constructie
894	ID imobil
1	Numar corp constructie
427	Numar postal
<span style="color: blue;">Parsu</span>	Toponimie
<span style="color: red;">—</span>	Limita UAT si teritorii invecinate
<span style="color: blue;">—</span>	Limita intravilan

Executant: Asocierea S.C. PROCAD S.R.L. -  
 S.C. GEOMATICS INTEGRATED SERVICES S.R.L.  
 Data: MAI 2023

Acest document a fost semnat electronic de catre Paul-Daniel DUMITRU,  
 reprezentant al S.C. GEOMATICS INTEGRATED SERVICES S.R.L