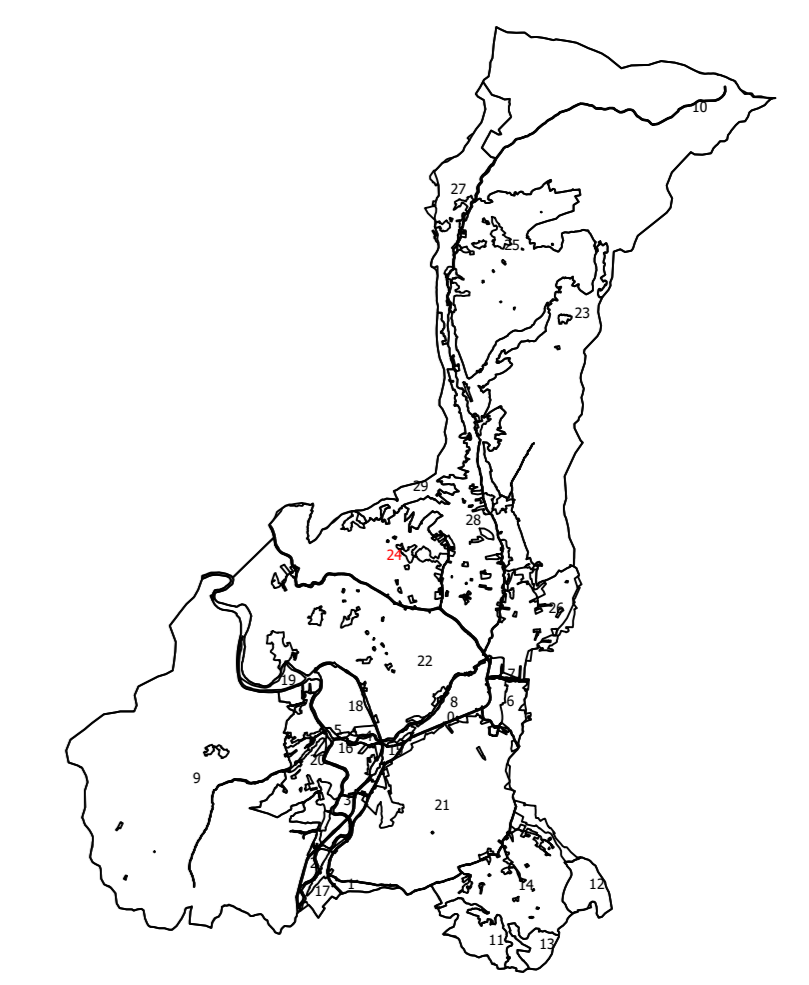


**PLAN CADASTRAL**  
**UAT: HALMAGIU**  
**Judet: ARAD**  
**Sectoare cadastrale:**  
**24**  
 Scara 1:1000  
 Sistem de proiectie STEREO 1970  
 Plansa 187



Schita cu dispunerea sectorului



Schema de dispunere a planselor

Plansa 171	Plansa 172	Plansa 173
Plansa 186	Plansa 187	Plansa 188
Plansa 201	Plansa 202	Plansa 203

**Legenda:**

<span style="border-bottom: 1px solid green; width: 20px; display: inline-block;"></span>	Limita sector cadastral
<span style="border: 1px solid green; padding: 2px; display: inline-block; width: 10px; height: 10px;"></span>	Numar sector cadastral
<span style="border: 1px solid green; padding: 2px; display: inline-block; width: 10px; height: 10px;"></span>	Numar tarla
<span style="border-bottom: 1px solid black; width: 20px; display: inline-block;"></span>	Limita imobil
<span style="border-bottom: 1px dashed black; width: 20px; display: inline-block;"></span>	Limita constructie
894	ID imobil
1	Numar corp constructie
427	Numar postal
<span style="color: blue; font-weight: bold;">Bodesti</span>	Toponimie
<span style="border-bottom: 1px solid red; width: 20px; display: inline-block;"></span>	Limita UAT si teritorii invecinate
<span style="border-bottom: 1px solid blue; width: 20px; display: inline-block;"></span>	Limita intravilan

Executant: Asocierea S.C. PROCAD S.R.L. -  
 S.C. GEOMATICS INTEGRATED SERVICES S.R.L.  
 Data: MAI 2023

Acest document a fost semnat electronic de catre Paul-Daniel DUMITRU,  
 reprezentant al S.C. GEOMATICS INTEGRATED SERVICES S.R.L.

Documente spre publicare

