

PLAN CADASTRAL

Comuna Stoenești, jud. Argeș

Sector cadastral nr. 10

Scara 1:2000

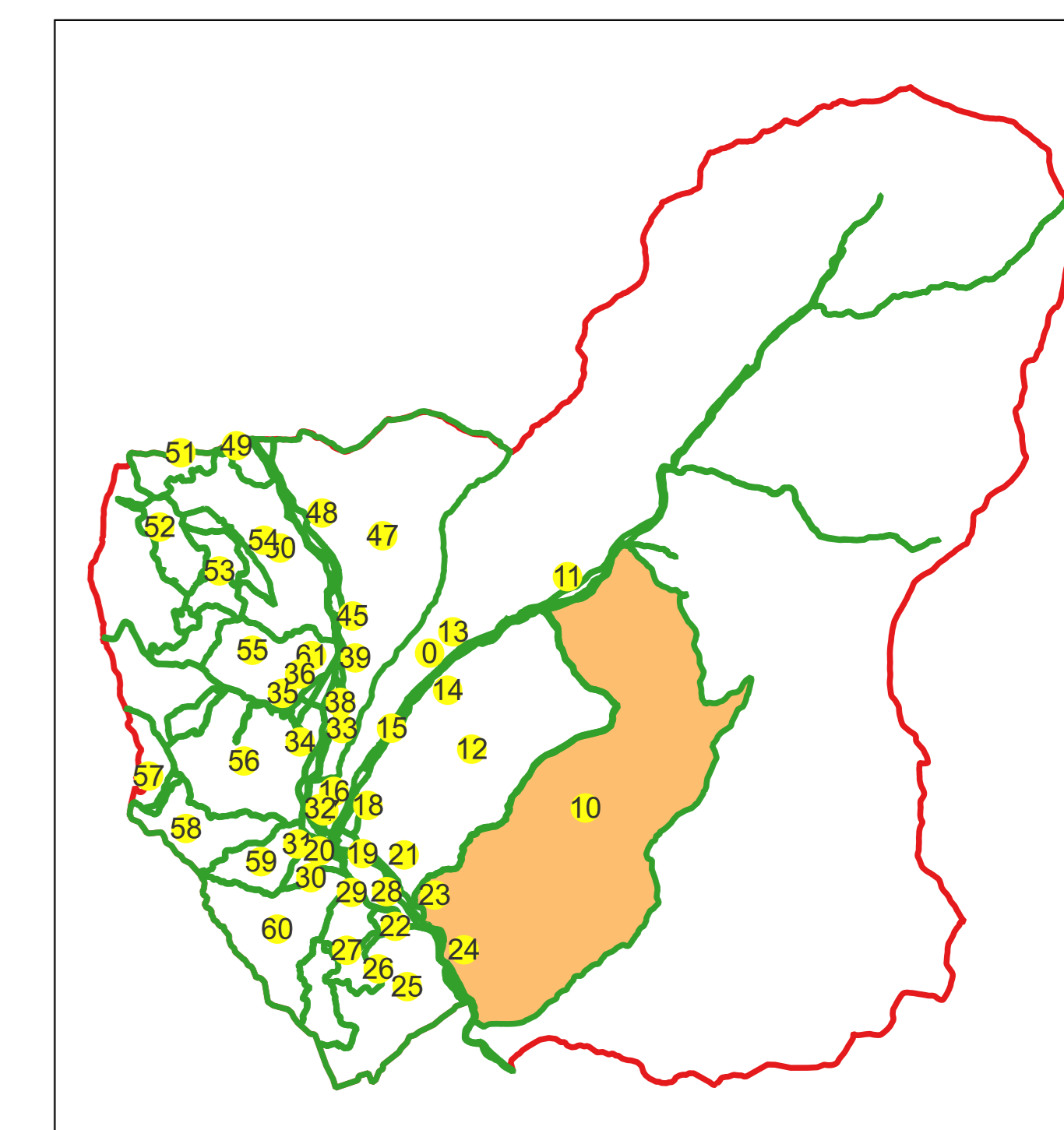
Sistem de proiecție: Stereografic 1970

Planșa nr. 1/10

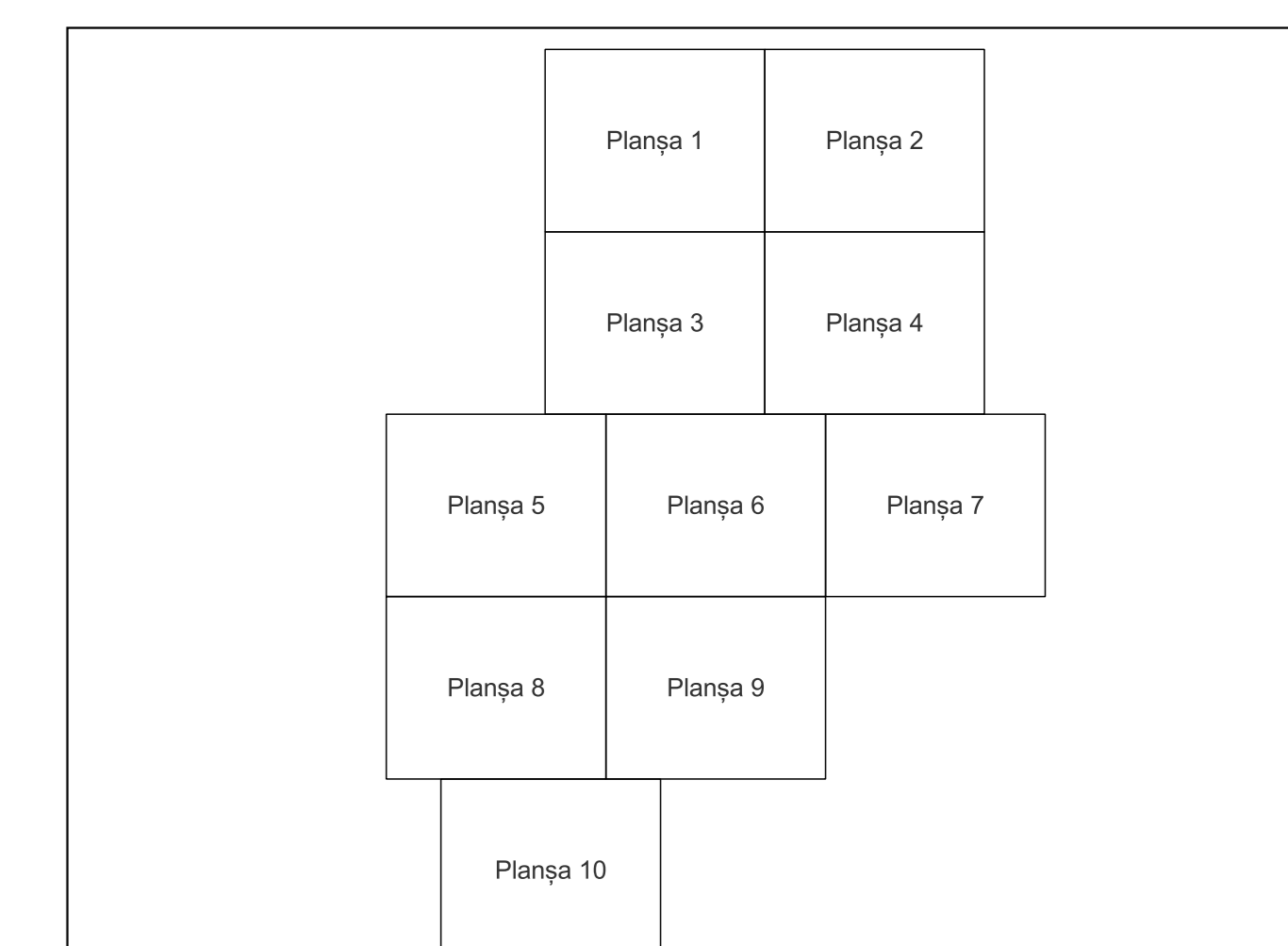
spre publicare



Schema dispunerii sectoarelor cadastrale



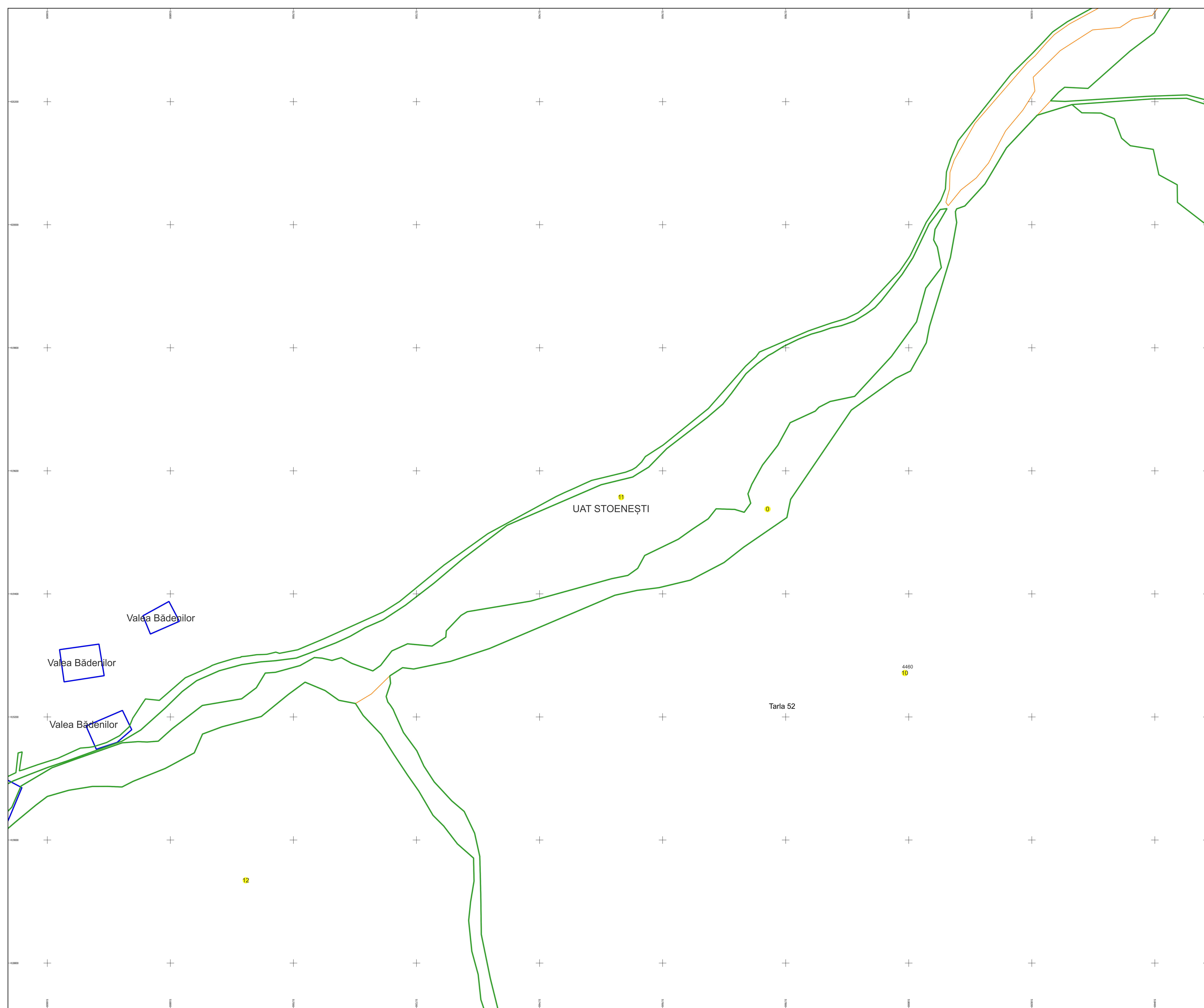
Schema dispunerii planșelor



Legenda	
	LIMITA UAT
	DENUMIRE UAT
	LIMITA SECTOR
	NUMAR SECTOR CADASTRAL
	LIMITA INTRAVILAN
	DENUMIRE INTRAVILAN
	LIMITA CLADIRE
	NUMAR CORP
	LIMITA IMOBIL
	ID IMOBIL
	NUMAR POSTAL
	LIMITA TARLA
	NUMAR TARLA

Semnat electronic de către Ing.
Mihal-Alexandru Hruza conform
Împunătorului nr. 154/16.07.2021

Data 11.03.2024



PLAN CADASTRAL

Comuna Stoenești, jud. Argeș

Sector cadastral nr. 10

Scara 1:2000

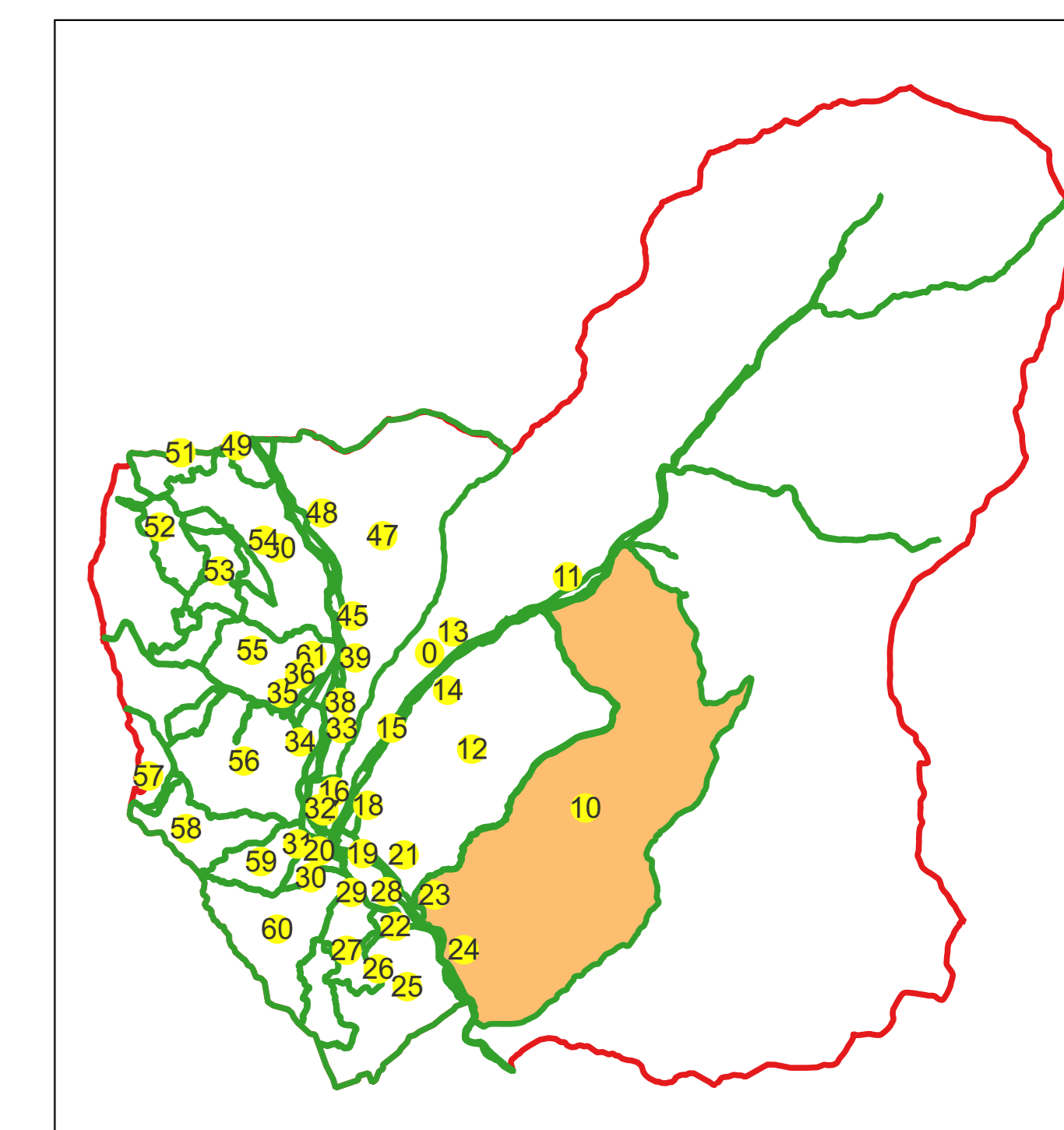
Sistem de proiecție: Stereografic 1970

Planșa nr. 2/10

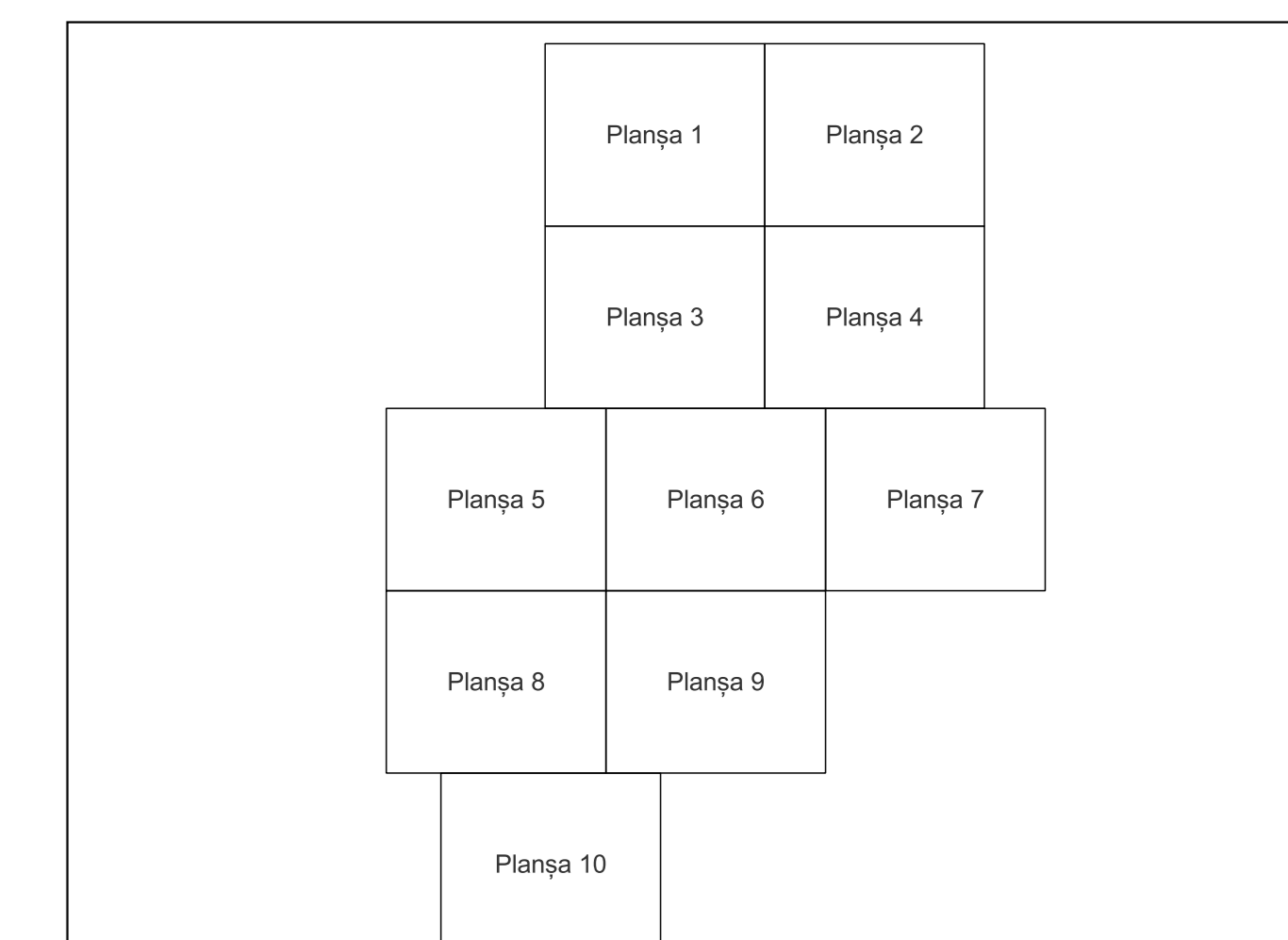
spre publicare



Schema dispunerii sectoarelor cadastrale



Schema dispunerii planșelor



Legenda	
	LIMITA UAT
	DENUMIRE UAT
	LIMITA SECTOR
	NUMAR SECTOR CADASTRAL
	LIMITA INTRAVILAN
	DENUMIRE INTRAVILAN
	LIMITA CLADIRE
	NUMAR CORP
	LIMITA IMOBIL
	ID IMOBIL
	NUMAR POSTAL
	LIMITA TARLA
	NUMAR TARLA

Semnăt electronic de către Ing.
Mihal-Alexandru Hruza conform
Împunericii nr. 154/16.07.2021

Data 11.03.2024

UAT STOENEȘTI

4460 Tarla 52
10

PLAN CADASTRAL

Comuna Stoenești, jud. Argeș

Sector cadastral nr. 10

Scara 1:2000

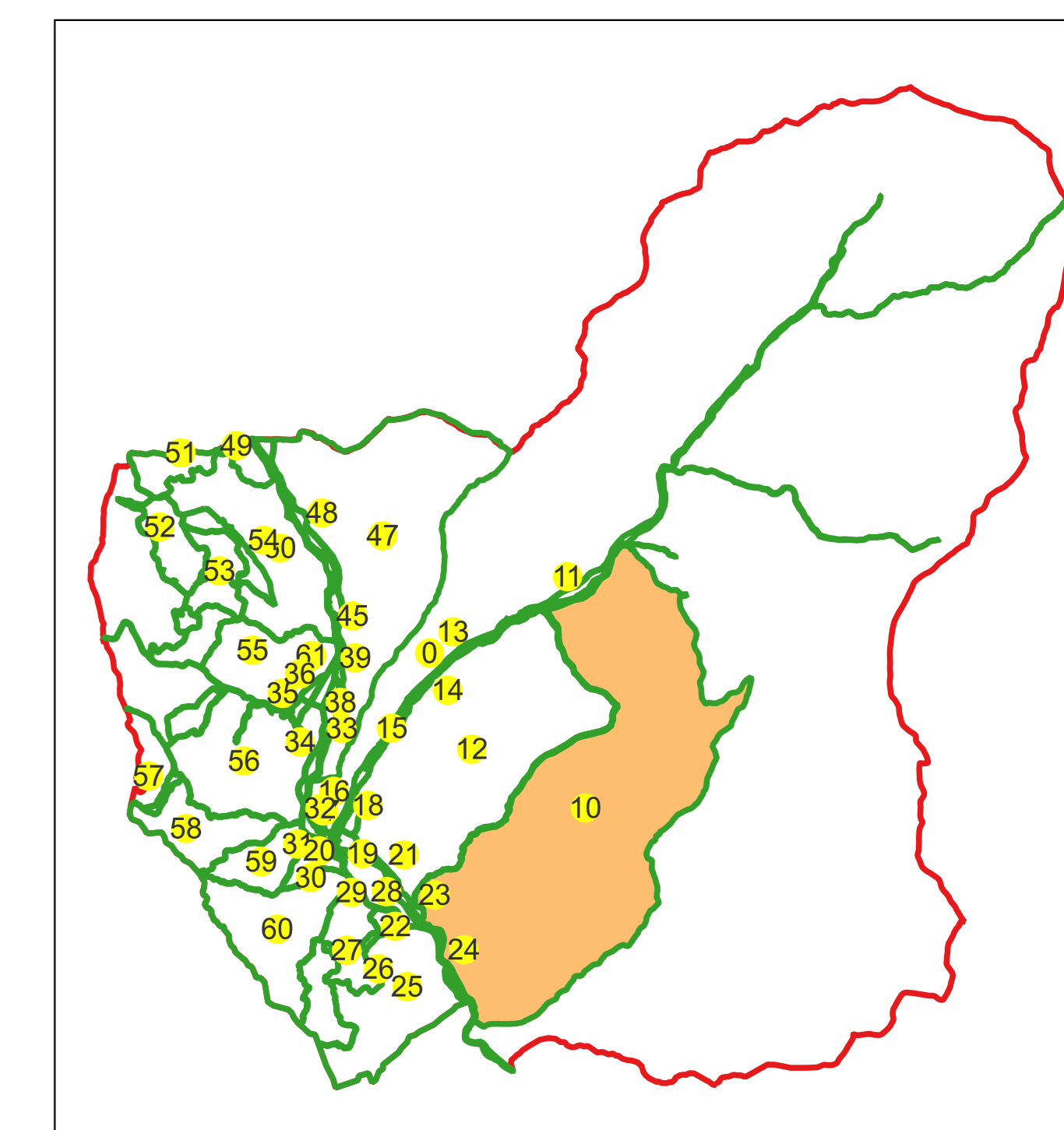
Sistem de proiecție: Stereografic 1970

Planșa nr. 3/10

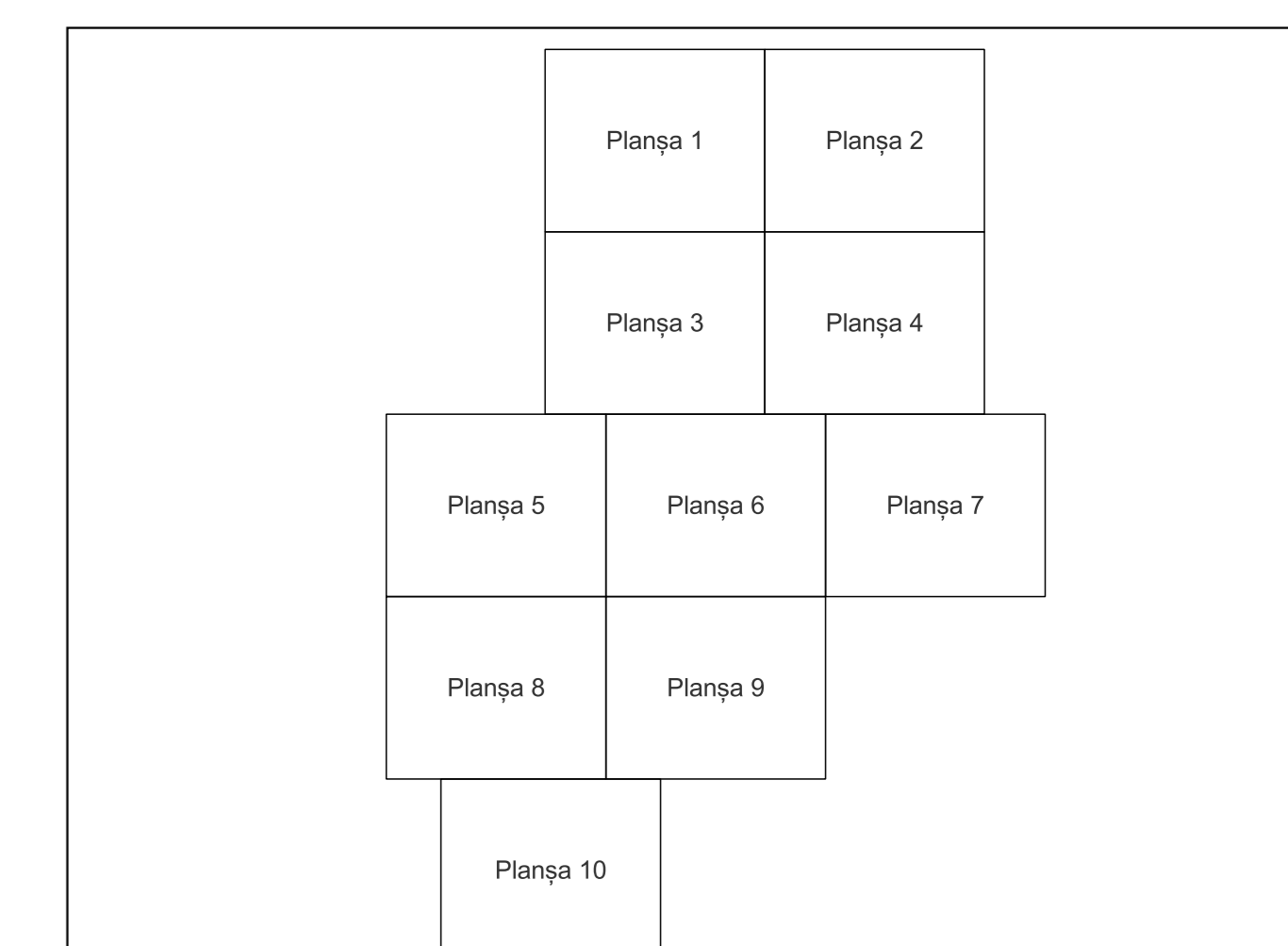
spre publicare



Schema dispunerii sectoarelor cadastrale



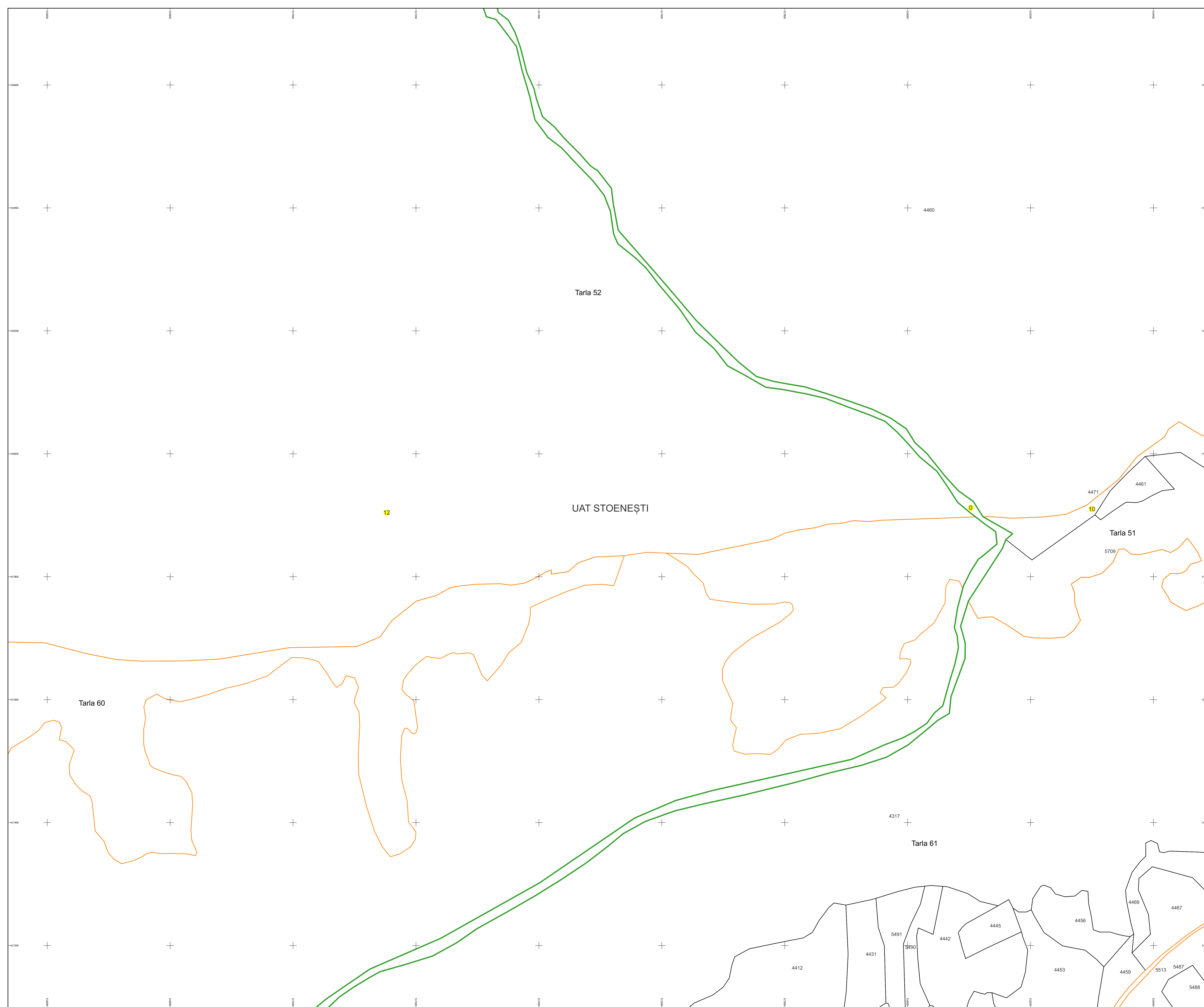
Schema dispunerii planșelor



Legenda	
	LIMITA UAT
	DENUMIRE UAT
	LIMITA SECTOR
	NUMAR SECTOR CADASTRAL
	LIMITA INTRAVILAN
	DENUMIRE INTRAVILAN
	LIMITA CLADIRE
	NUMAR CORP
	LIMITA IMOBIL
	ID IMOBIL
	NUMAR POSTAL
	LIMITA TARLA
	NUMAR TARLA

Semnăt electronic de către Ing.
Mihal-Alexandru Hruza conform
Împunătorului nr. 154/16.07.2021

Data 11.03.2024



PLAN CADASTRAL

Comuna Stoenești, jud. Argeș

Sector cadastral nr. 10

Scara 1:2000

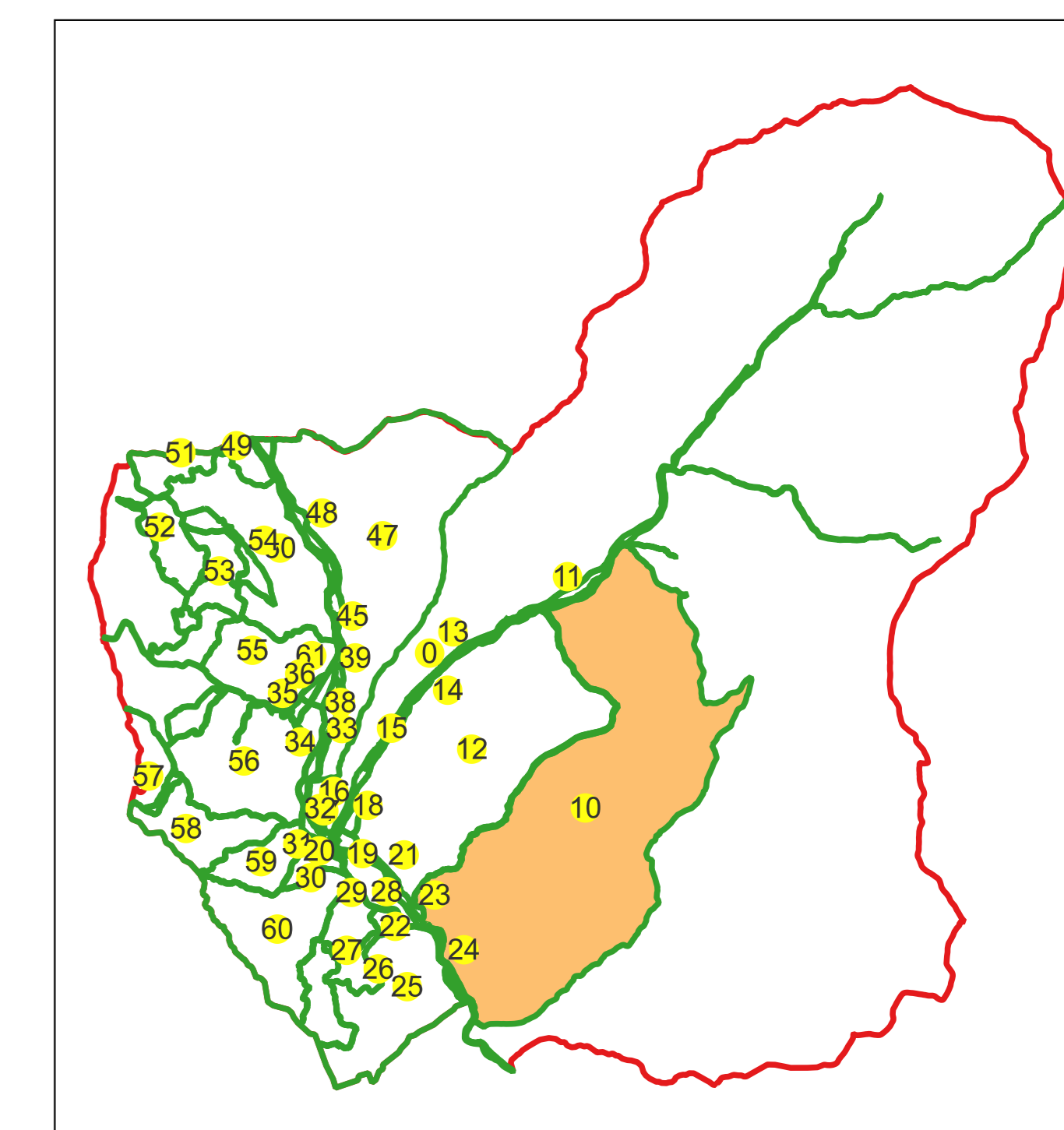
Sistem de proiecție: Stereografic 1970

Planșa nr. 4/10

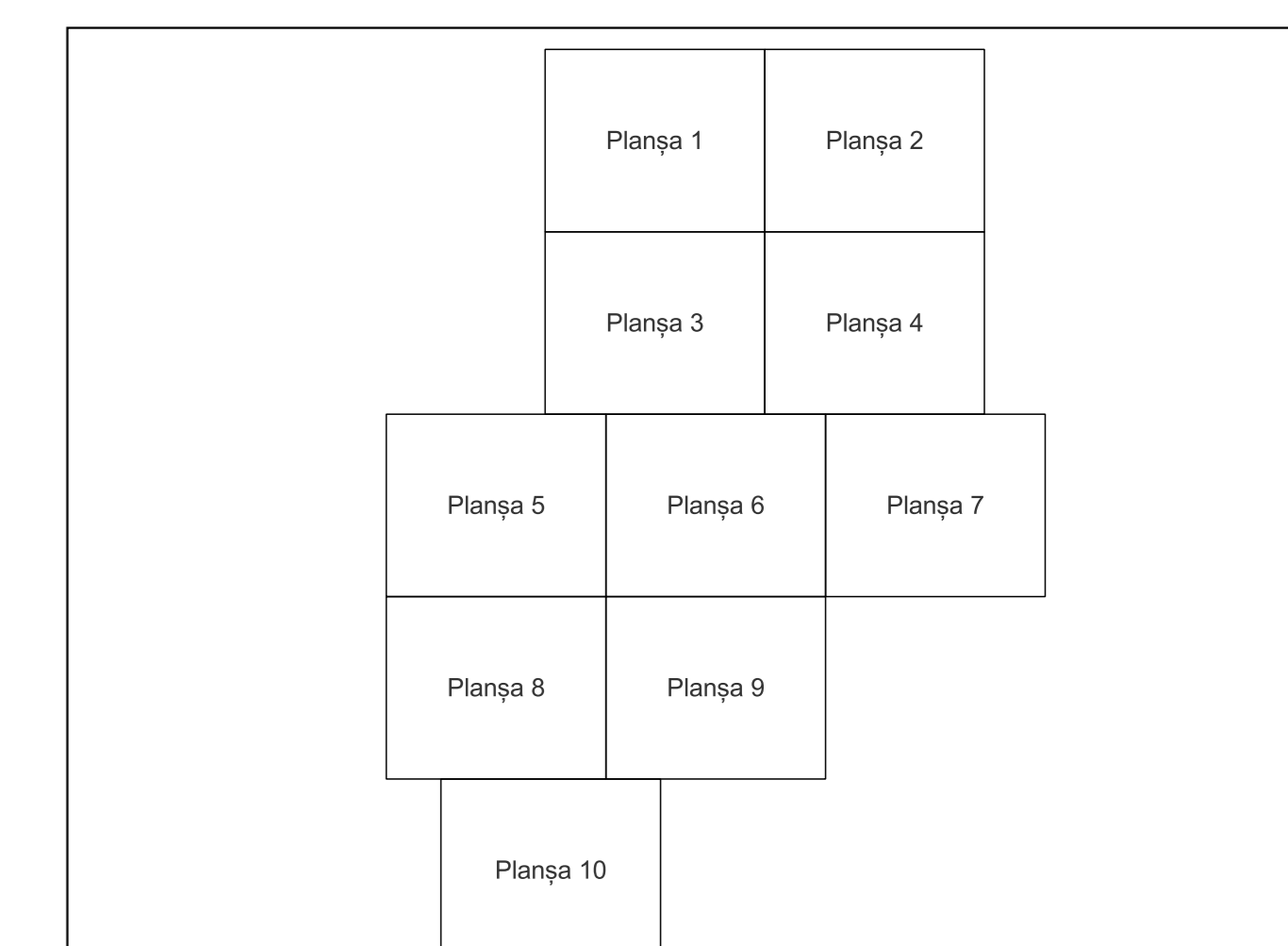
spre publicare



Schema dispunerii sectoarelor cadastrale



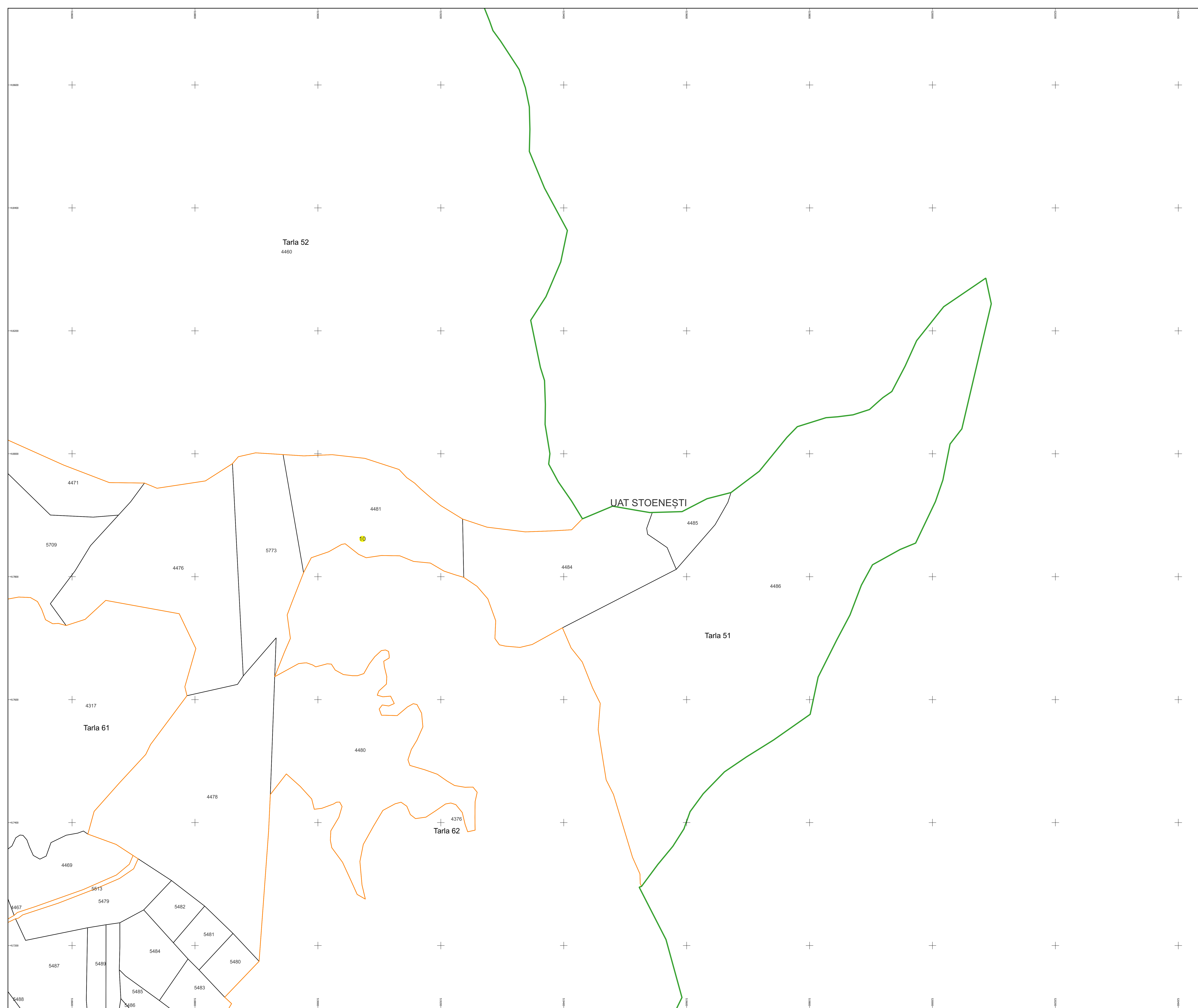
Schema dispunerii planșelor



Legenda	
	LIMITA UAT
	DENUMIRE UAT
	LIMITA SECTOR
	NUMAR SECTOR CADASTRAL
	LIMITA INTRAVILAN
	DENUMIRE INTRAVILAN
	LIMITA CLADIRE
	NUMAR CORP
	LIMITA IMOBIL
	ID IMOBIL
	NUMAR POSTAL
	LIMITA TARLA
	NUMAR TARLA

Semnat electronic de către Ing.
Mihal-Alexandru Hruza conform
Împunătorului nr. 154/16.07.2021

Data 11.03.2024



PLAN CADASTRAL

Comuna Stoenești, jud. Argeș

Sector cadastral nr. 10

Scara 1:2000

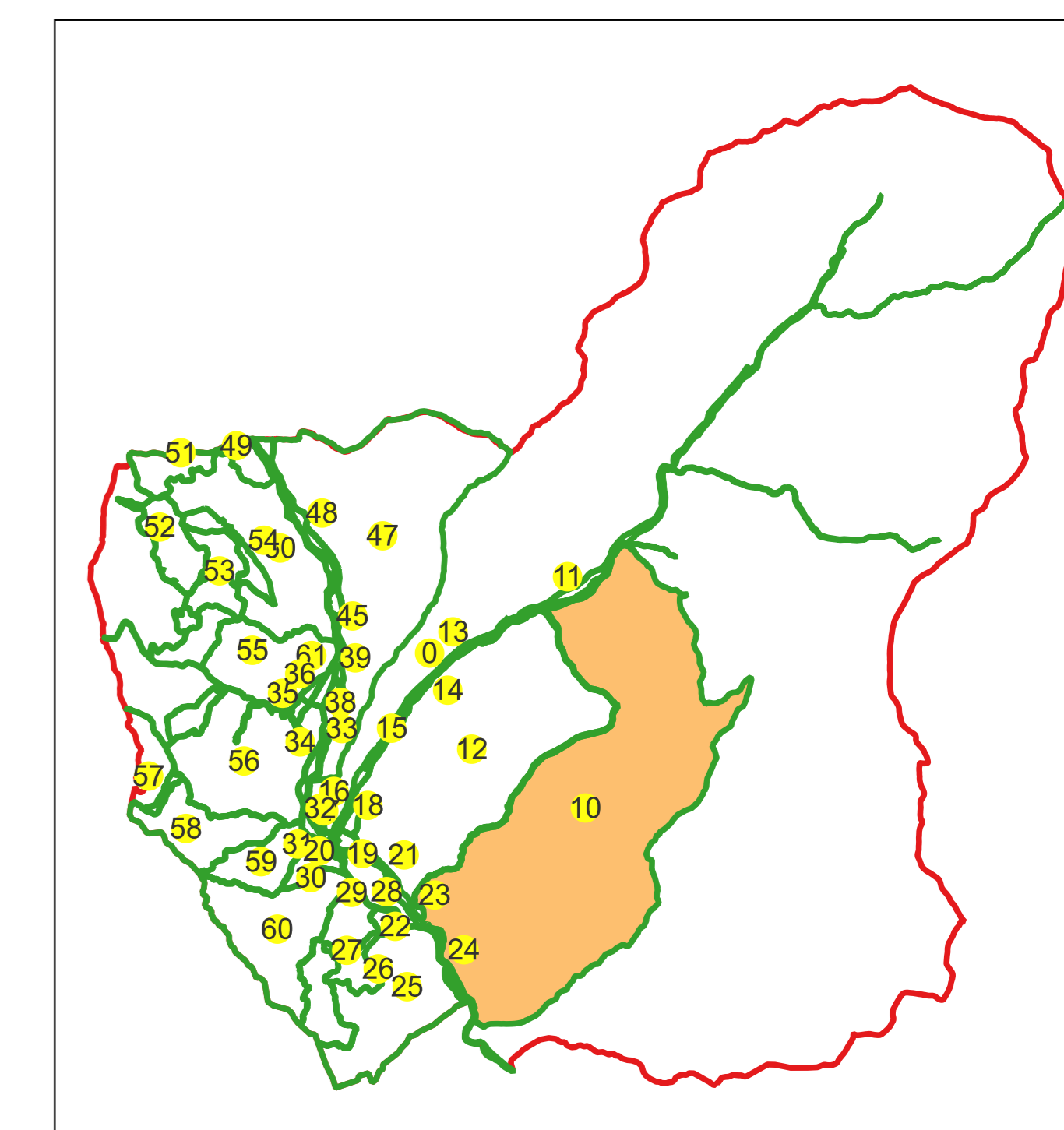
Sistem de proiecție: Stereografic 1970

Planșa nr. 6/10

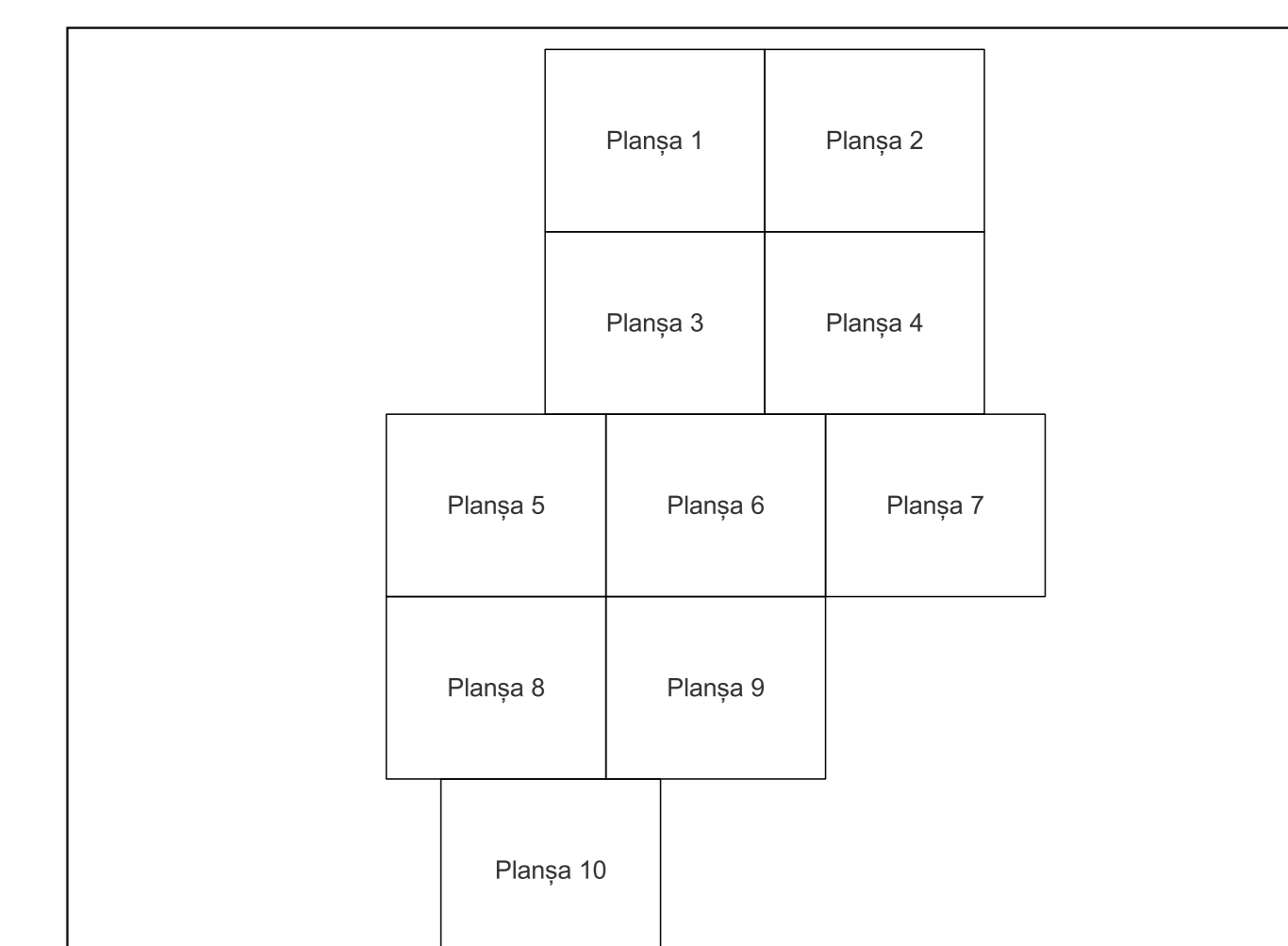
spre publicare



Schema dispunerii sectoarelor cadastrale



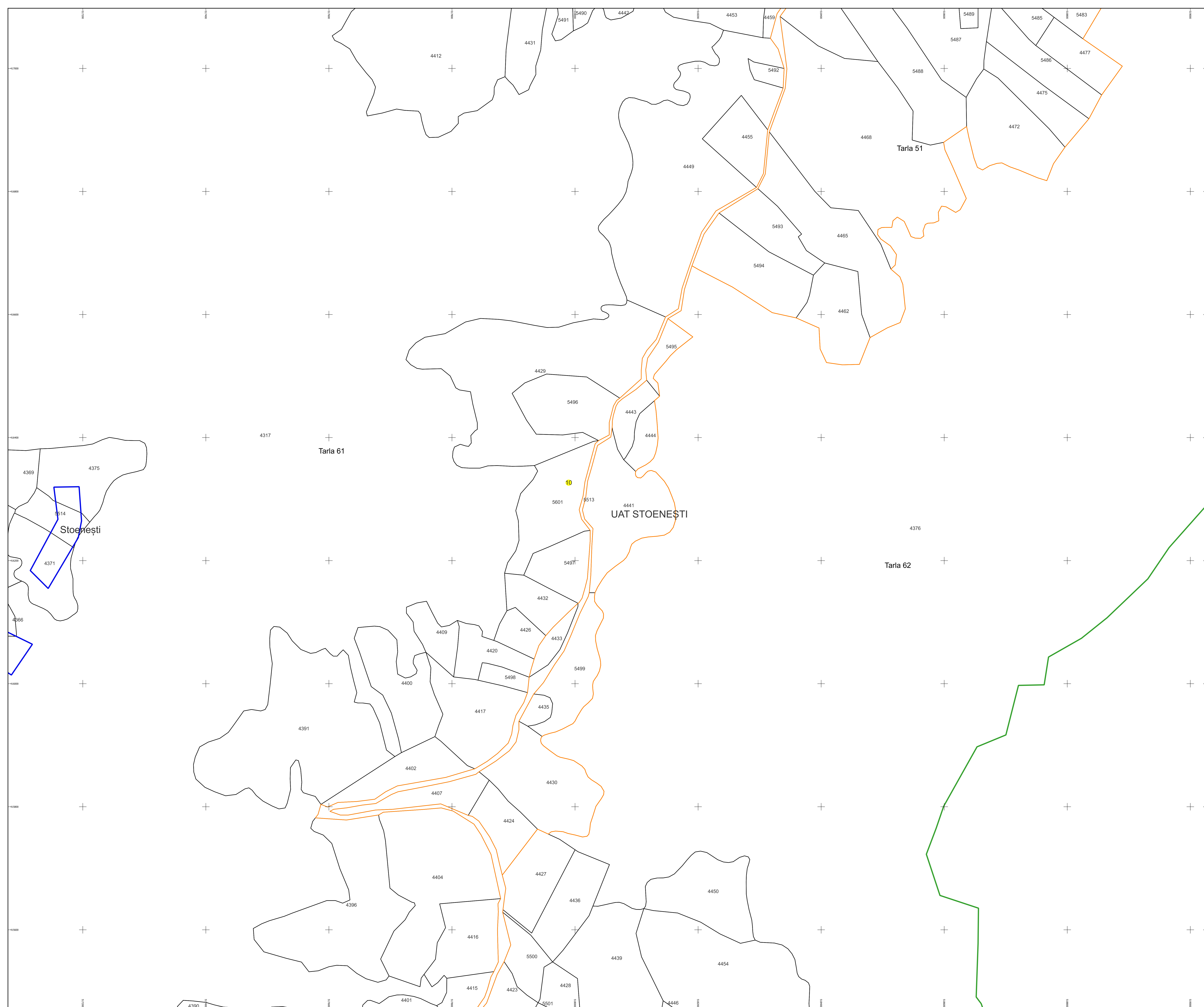
Schema dispunerii planșelor



Legenda	
	LIMITA UAT
	DENUMIRE UAT
	LIMITA SECTOR
	NUMAR SECTOR CADASTRAL
	LIMITA INTRAVILAN
	DENUMIRE INTRAVILAN
	LIMITA CLADIRE
	NUMAR CORP
	LIMITA IMOBIL
	ID IMOBIL
	NUMAR POSTAL
	LIMITA TARLA
	NUMAR TARLA

Semnat electronic de către Ing.
Mihal-Alexandru Hruza conform
Împuternicirii nr. 154/16.07.2021

Data 11.03.2024



PLAN CADASTRAL

Comuna Stoenești, jud. Argeș

Sector cadastral nr. 10

Scara 1:2000

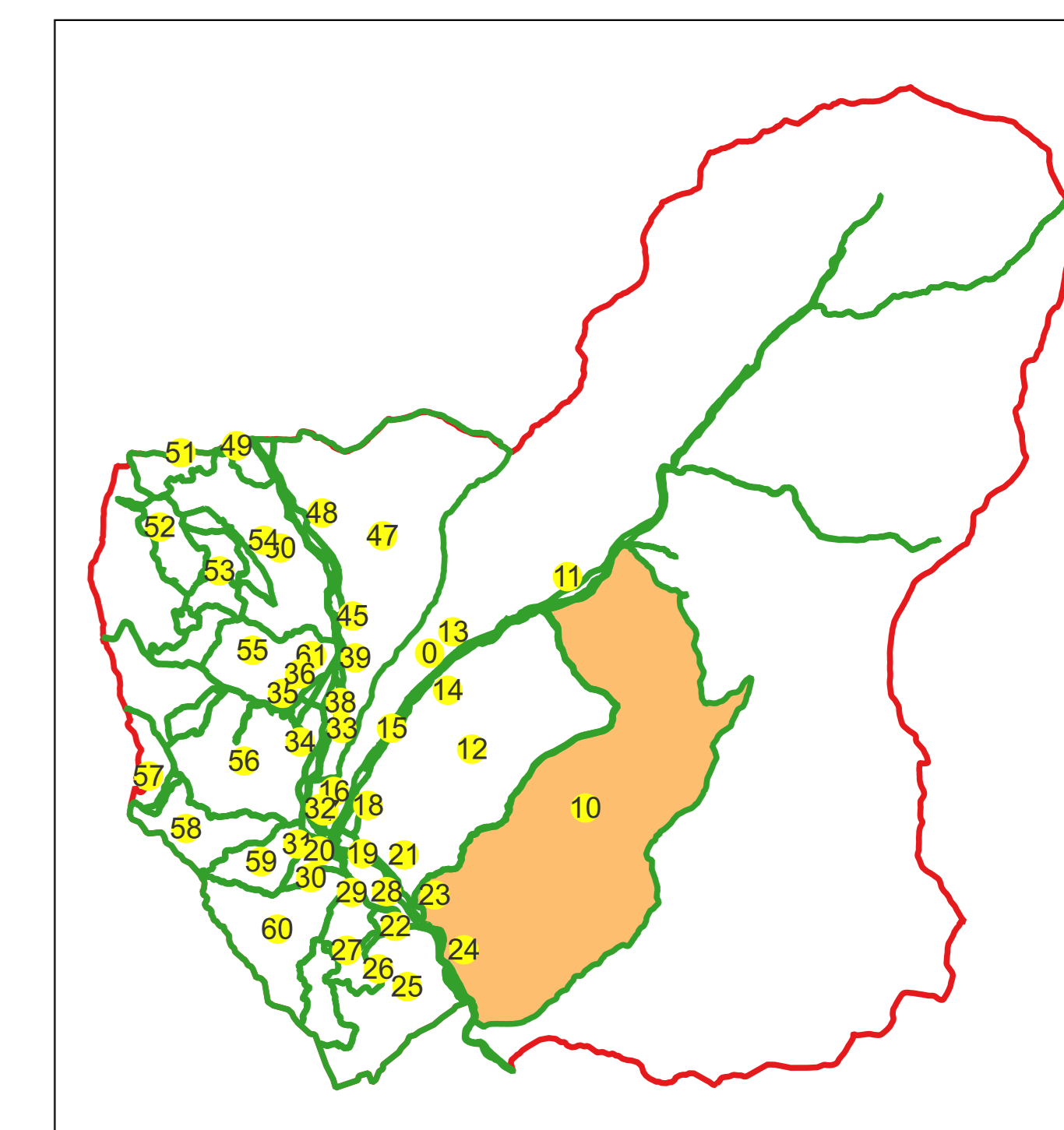
Sistem de proiecție: Stereografic 1970

Planșa nr. 7/10

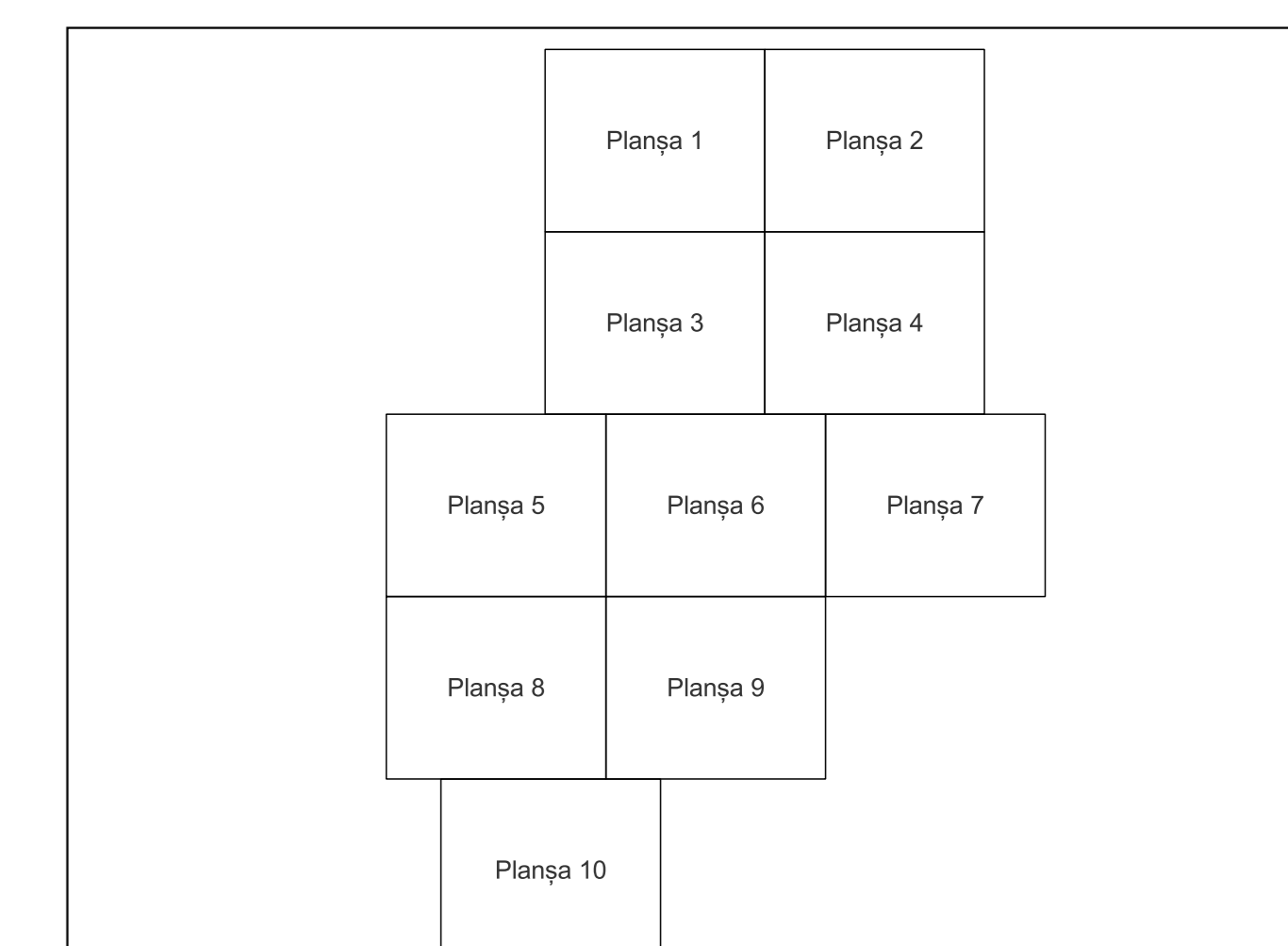
spre publicare



Schema dispunerii sectoarelor cadastrale



Schema dispunerii planșelor



Legenda	
	LIMITA UAT
	DENUMIRE UAT
	LIMITA SECTOR
	NUMAR SECTOR CADASTRAL
	LIMITA INTRAVILAN
	DENUMIRE INTRAVILAN
	LIMITA CLADIRE
	NUMAR CORP
	LIMITA IMOBIL
	ID IMOBIL
	NUMAR POSTAL
	LIMITA TARLA
	NUMAR TARLA

Semnat electronic de către Ing.
Mihal-Alexandru Hruza conform
Împuternicirii nr. 154/16.07.2021

Data 11.03.2024

UAT STOENEȘTI

4376 Tarla 62
10

PLAN CADASTRAL

Comuna Stoenești, jud. Argeș

Sector cadastral nr. 10

Scara 1:2000

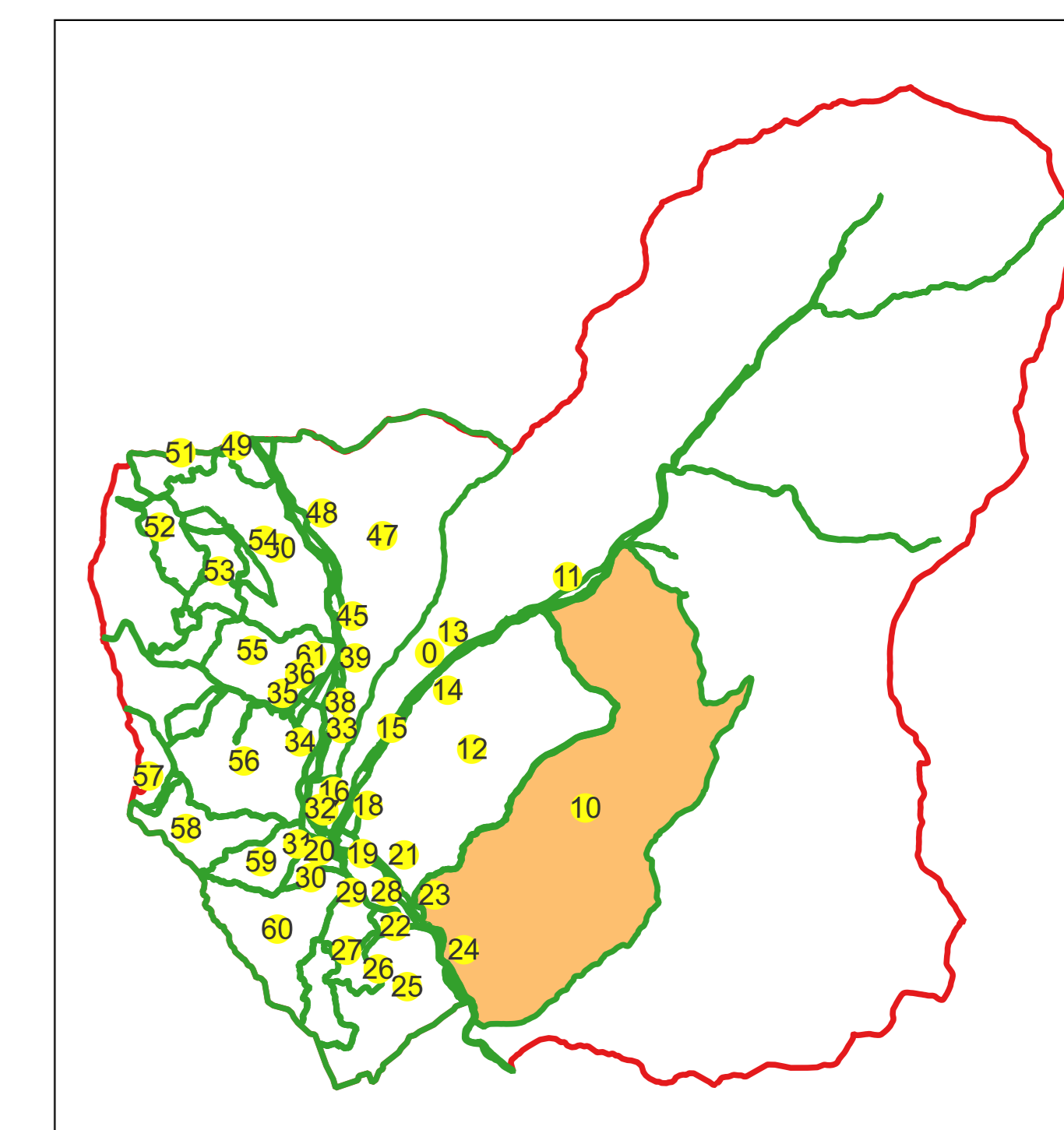
Sistem de proiecție: Stereografic 1970

Planșa nr. 8/10

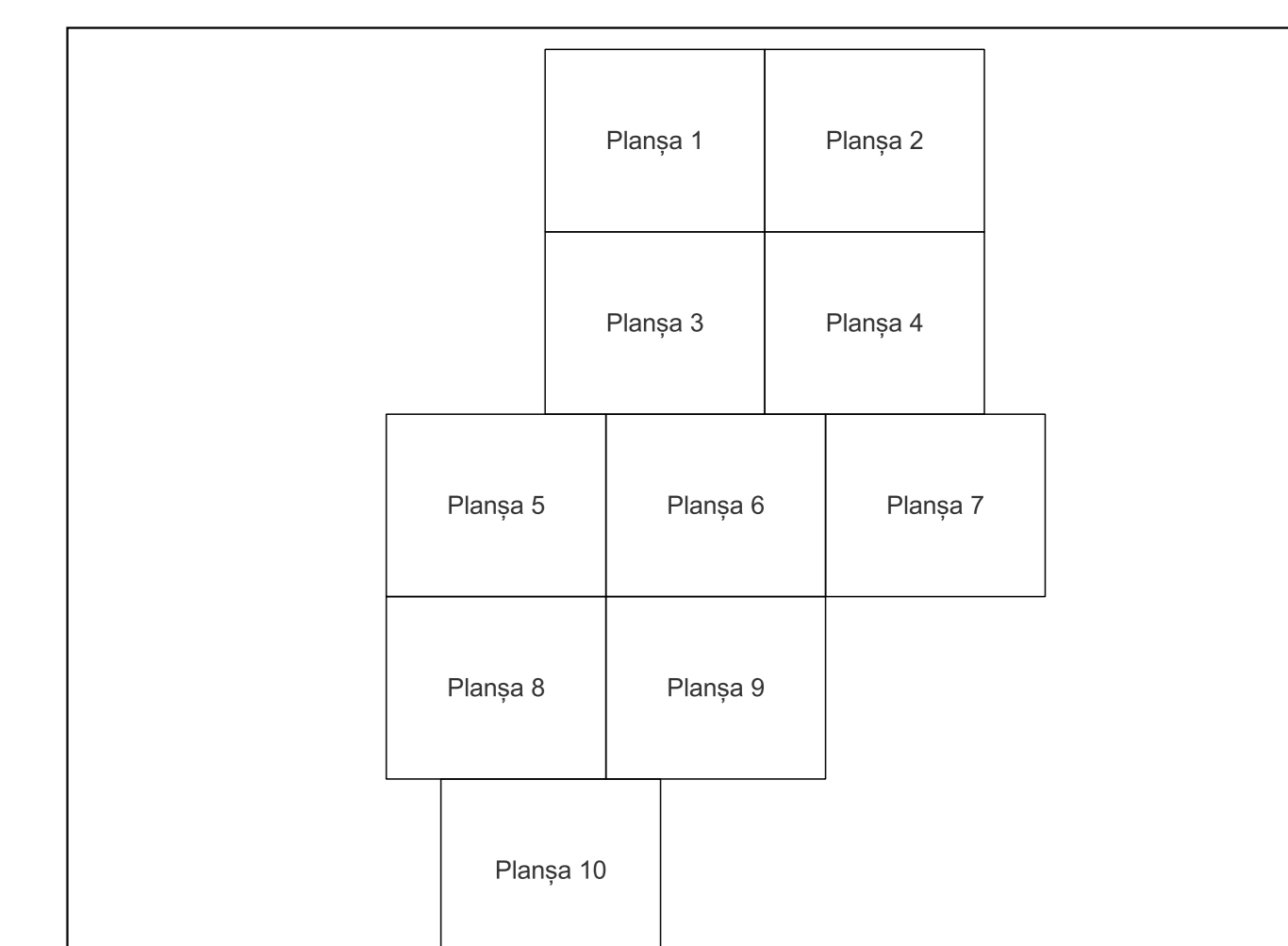
spre publicare



Schema dispunerii sectoarelor cadastrale



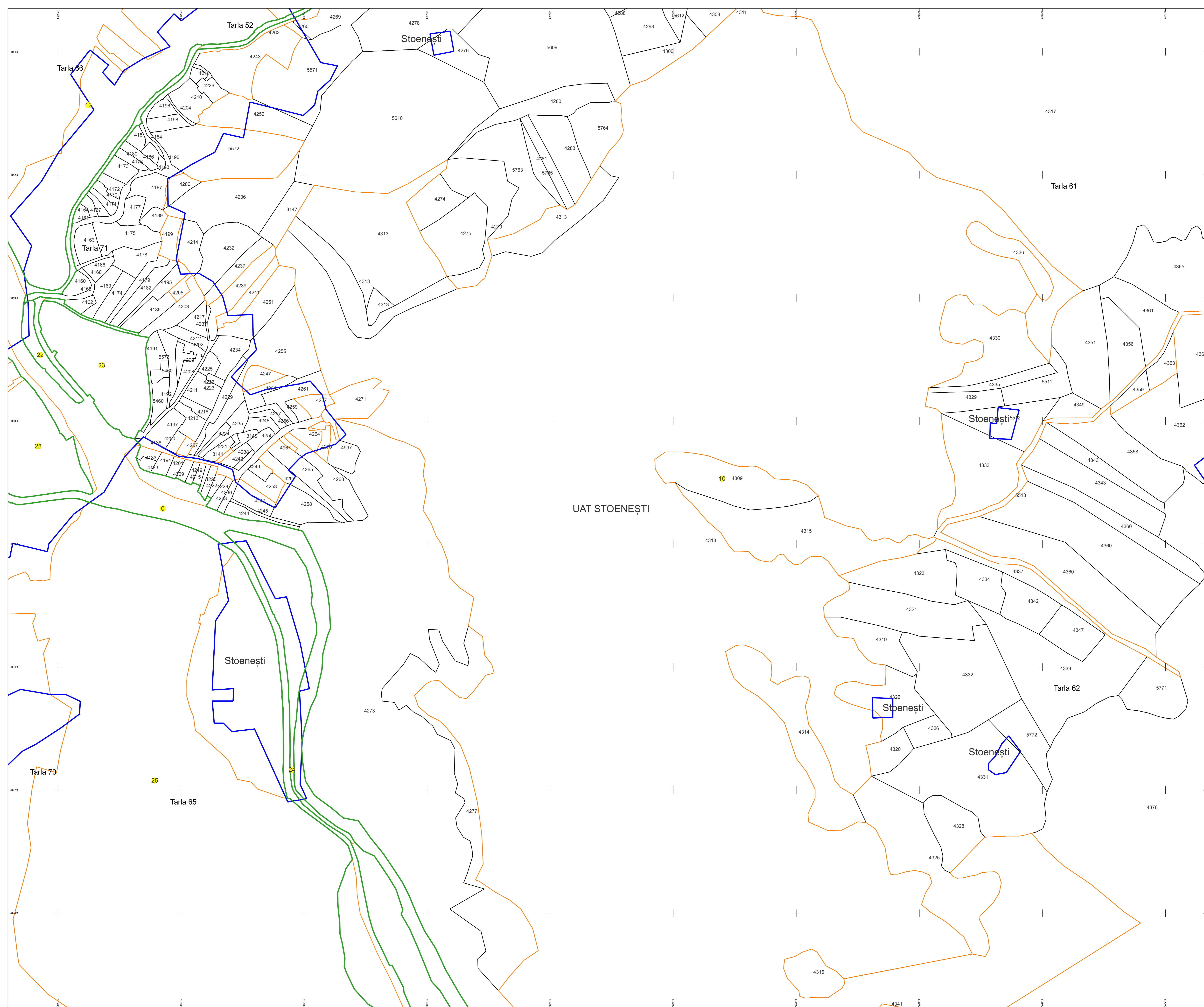
Schema dispunerii planșelor



Legenda	
	LIMITA UAT
	DENUMIRE UAT
	LIMITA SECTOR
	NUMAR SECTOR CADASTRAL
	LIMITA INTRAVILAN
	DENUMIRE INTRAVILAN
	LIMITA CLADIRE
	NUMAR CORP
	LIMITA IMOBIL
	ID IMOBIL
	NUMAR POSTAL
	LIMITA TARLA
	NUMAR TARLA

Semnat electronic de către Ing.
Mihal-Alexandru Hruza conform
Împunătorului nr. 154/16.07.2021

Data 11.03.2024



PLAN CADASTRAL

Comuna Stoenești, jud. Argeș

Sector cadastral nr. 10

Scara 1:2000

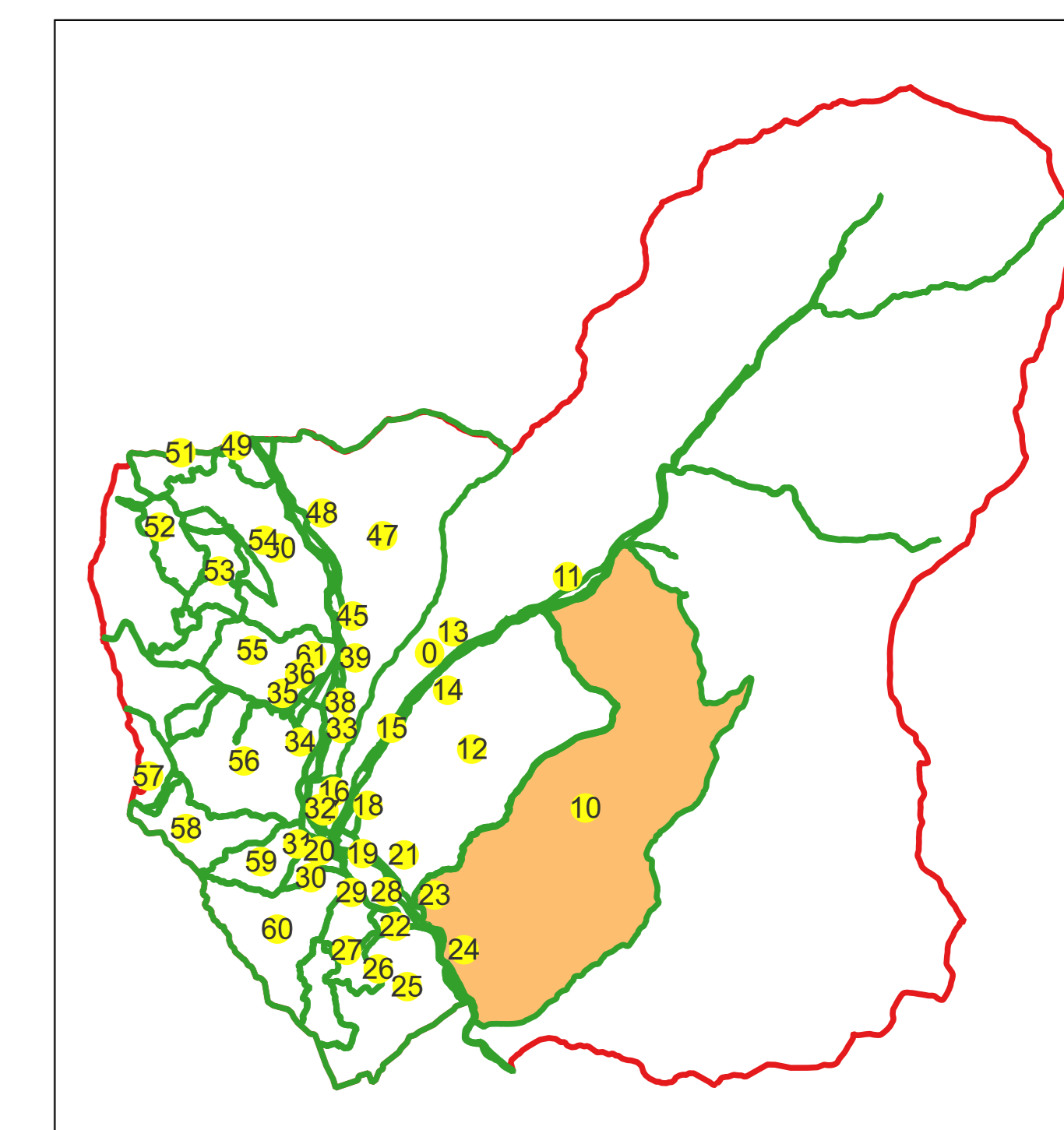
Sistem de proiecție: Stereografic 1970

Planșa nr. 9/10

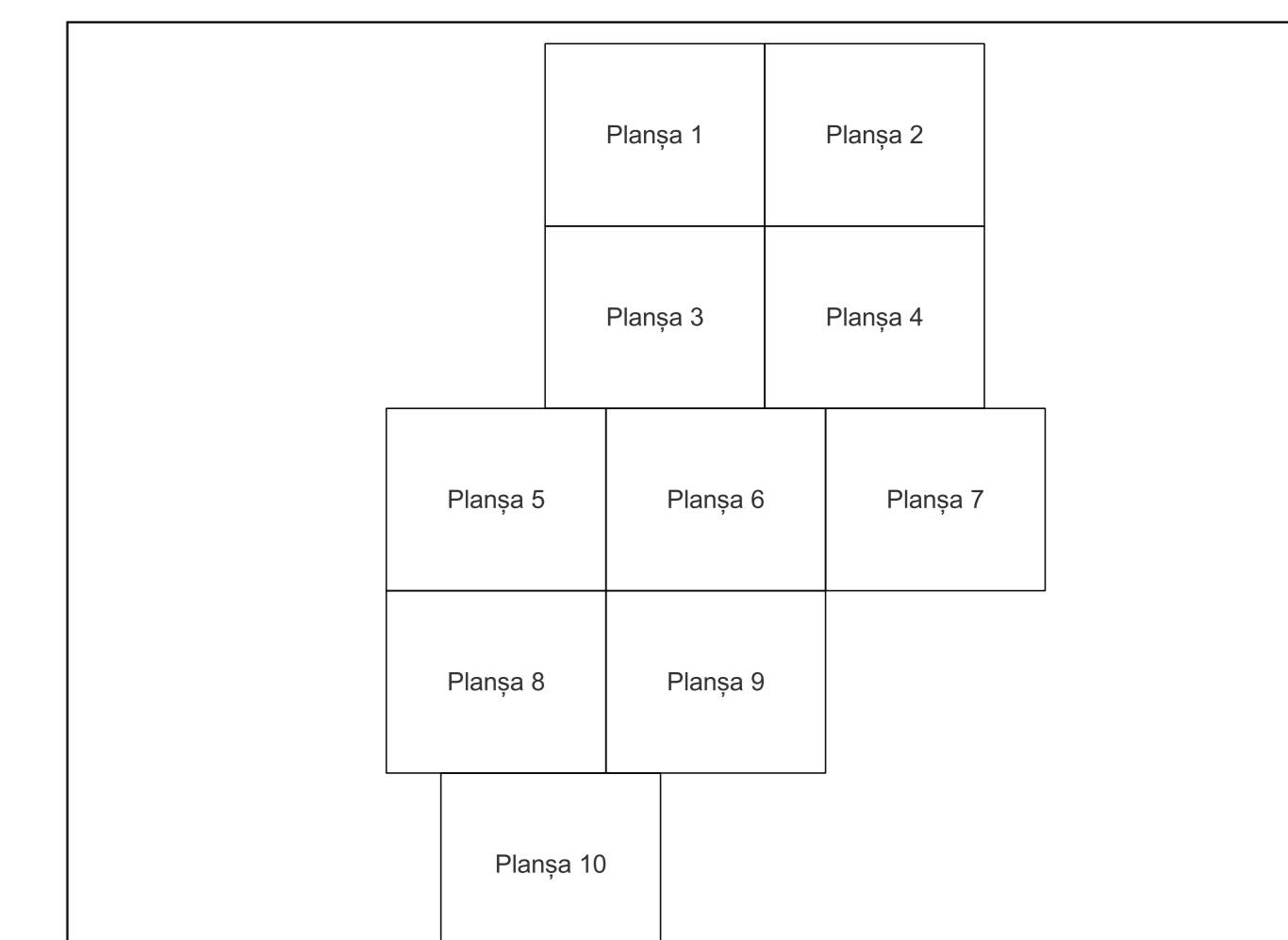
spre publicare



Schema dispoziției sectoarelor cadastrale



Schema dispoziției planșelor

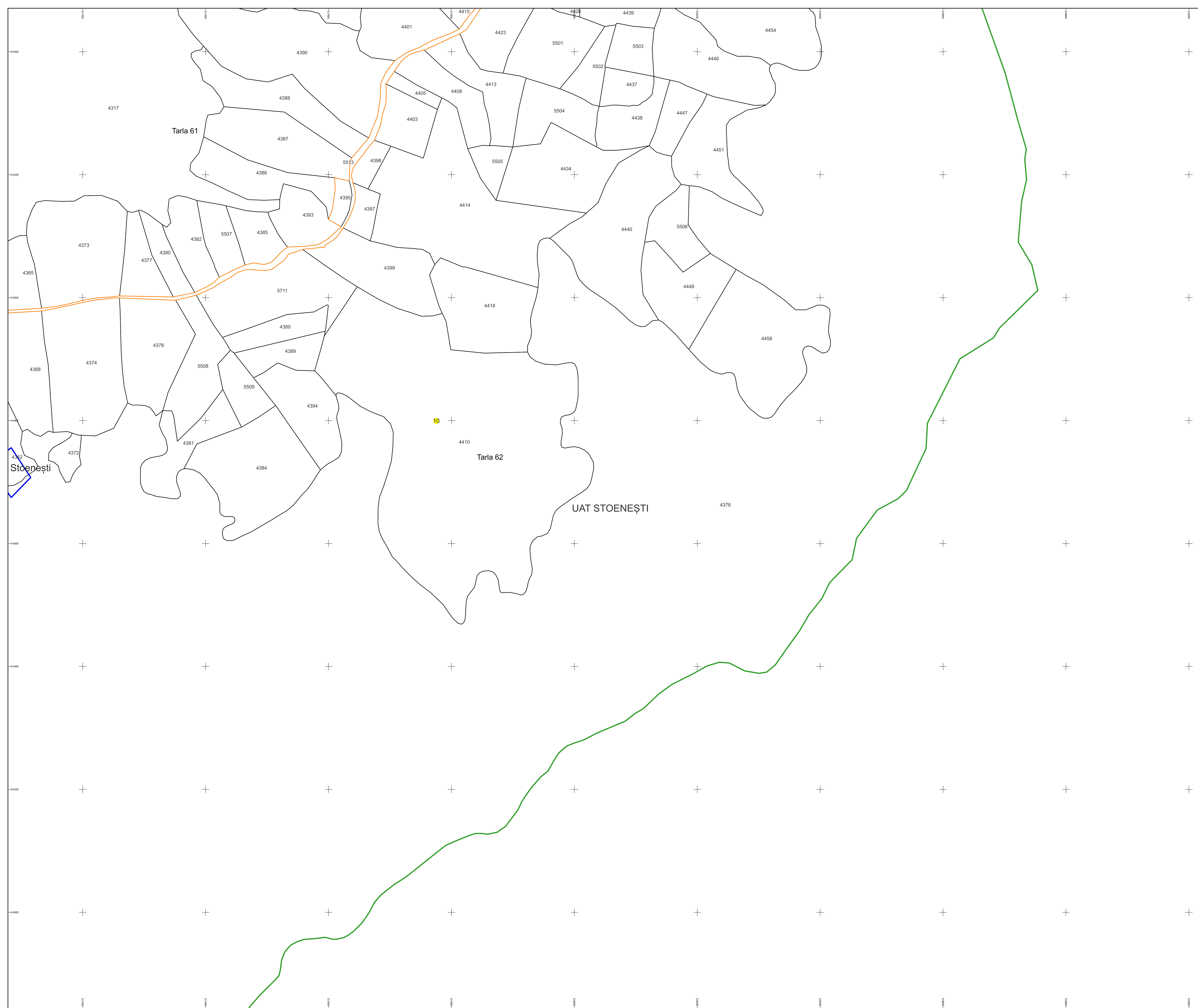


Legenda

	LIMITA UAT
	DENUMIRE UAT
	LIMITA SECTOR
	NUMAR SECTOR CADASTRAL
	LIMITA INTRAVILAN
	DENUMIRE INTRAVILAN
	LIMITA CLADIRE
	NUMAR CORP
	LIMITA IMOBIL
	ID IMOBIL
	NUMAR POSTAL
	LIMITA TARLA
	NUMAR TARLA

Semnat electronic de către Ing.
Mihal-Alexandru Hruza conform
Împuternicirii nr. 154/16.07.2021

Data 11.03.2024



PLAN CADASTRAL

Comuna Stoenești, jud. Argeș

Sector cadastral nr. 10

Scara 1:2000

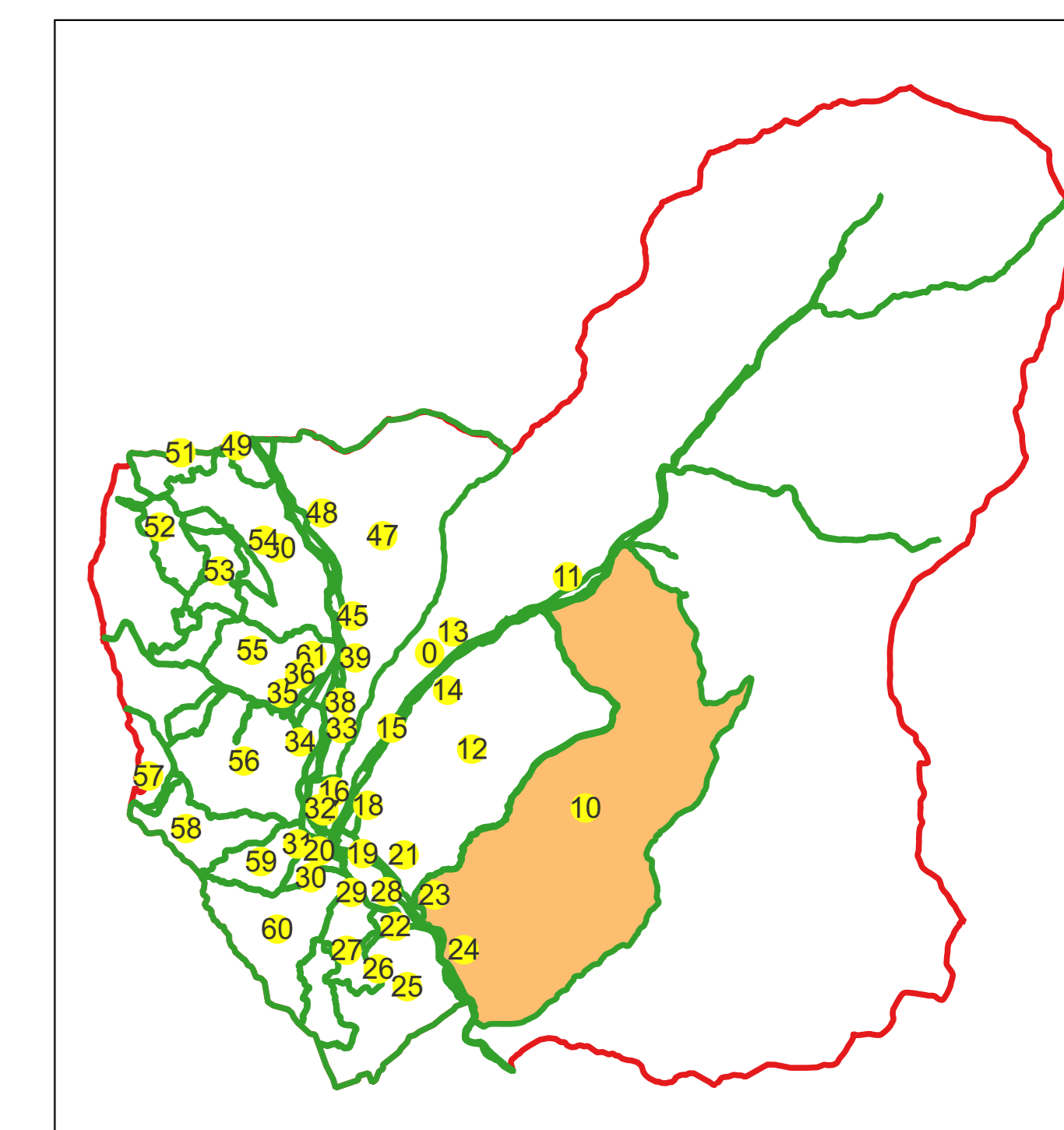
Sistem de proiecție: Stereografic 1970

Planșa nr. 10/10

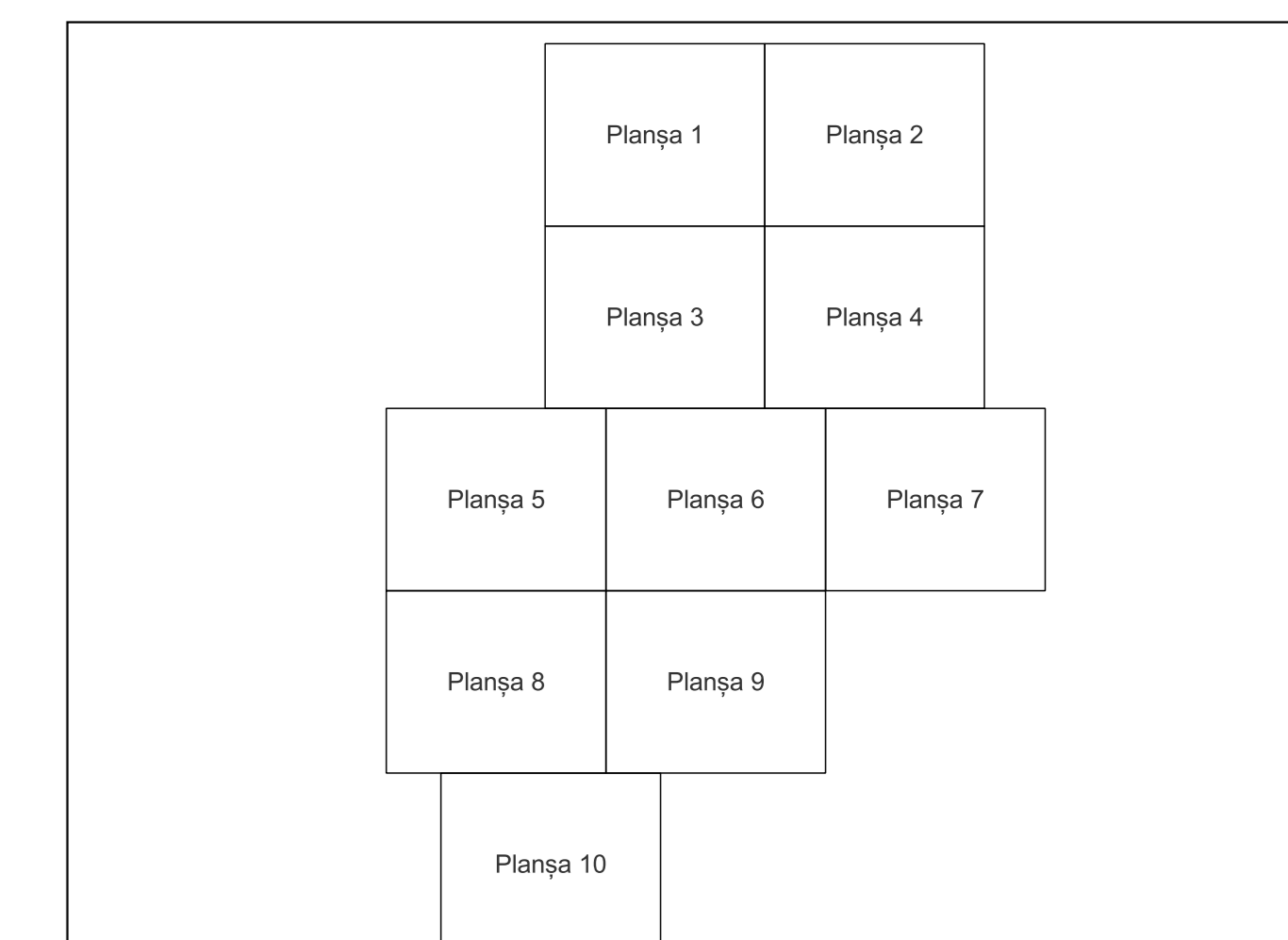
spre publicare



Schema dispunerii sectoarelor cadastrale



Schema dispunerii planșelor



Legenda	
	LIMITA UAT
UAT STOENEȘTI	DENUMIRE UAT
	LIMITA SECTOR
	NUMAR SECTOR CADASTRAL
	LIMITA INTRAVILAN
	DENUMIRE INTRAVILAN
	LIMITA CLADIRE
	NUMAR CORP
	LIMITA IMOBIL
	ID IMOBIL
	NUMAR POSTAL
	LIMITA TARLA
	NUMAR TARLA

Semnat electronic de către Ing.
Mihal-Alexandru Hruza conform
Împuntemicrii nr. 154/16.07.2021

Data 11.03.2024

