

# PLAN CADASTRAL

Comuna Stoenești, jud. Argeș

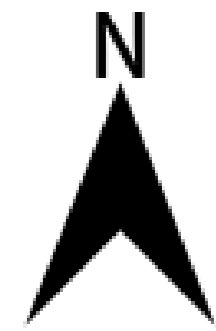
Sector cadastral nr. 53

Scara 1:1000

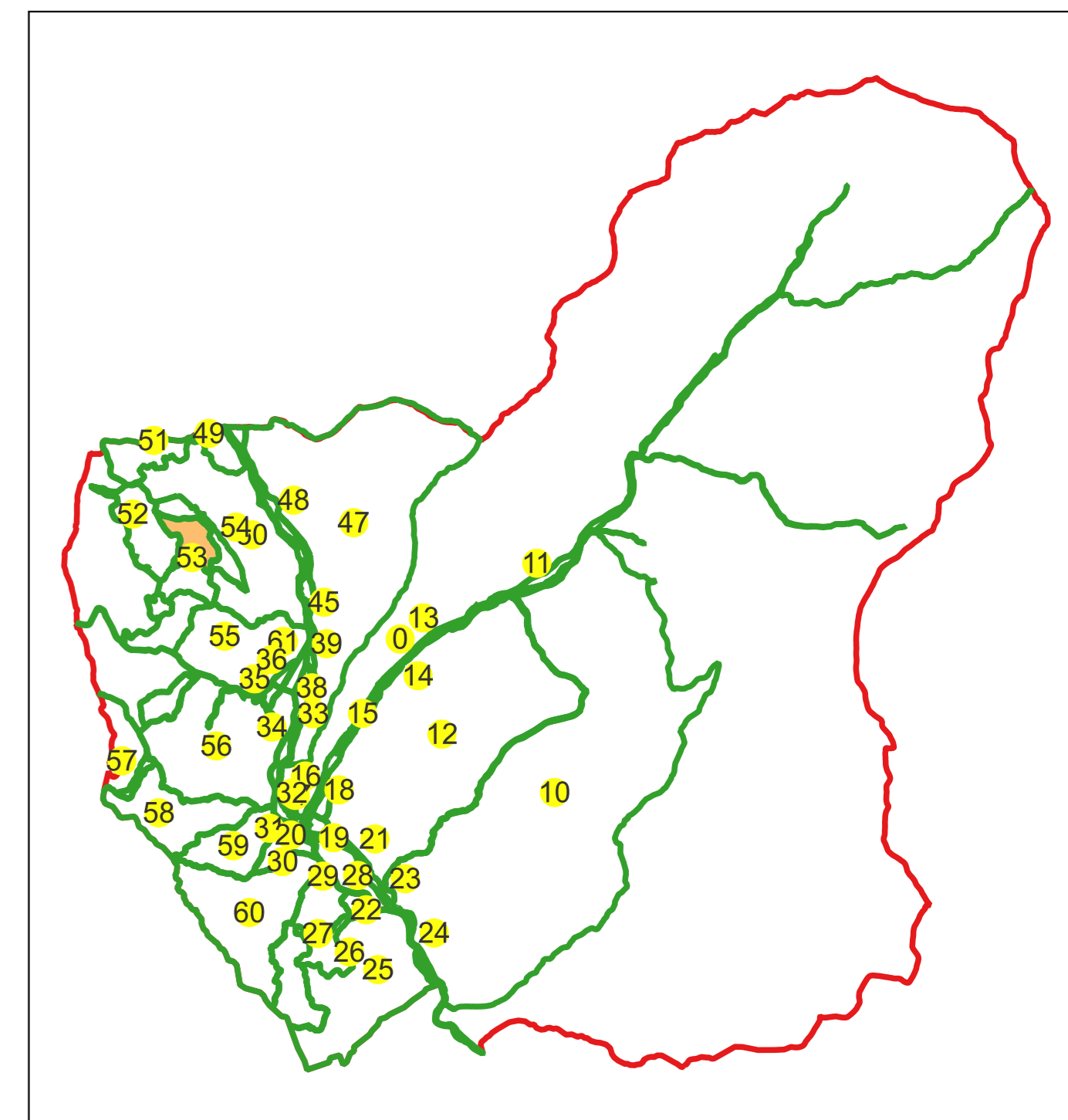
Sistem de proiecție: Stereografic 1970

Planșa nr. 1/2

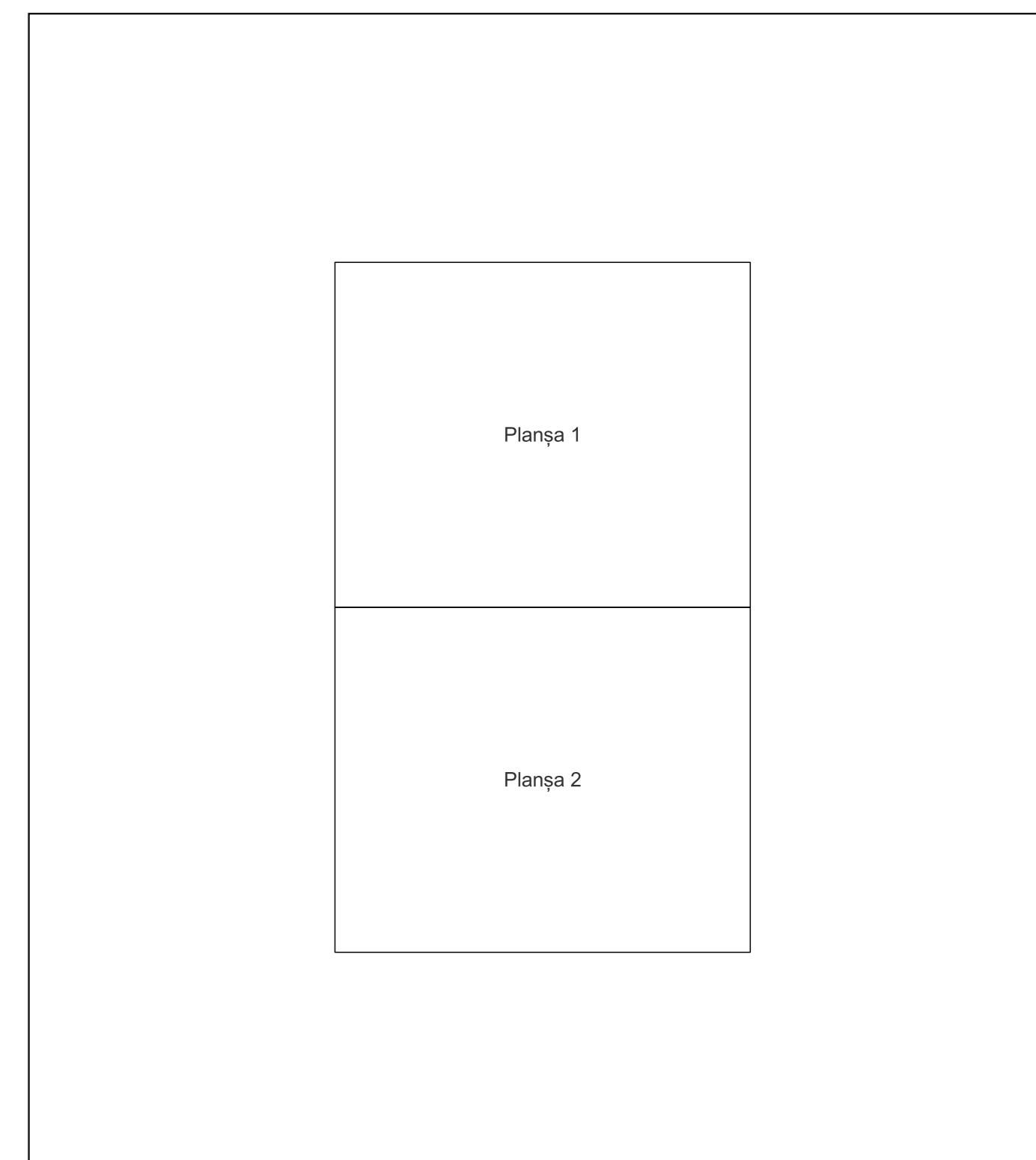
spre publicare



Schema dispunerii sectoarelor cadastrale



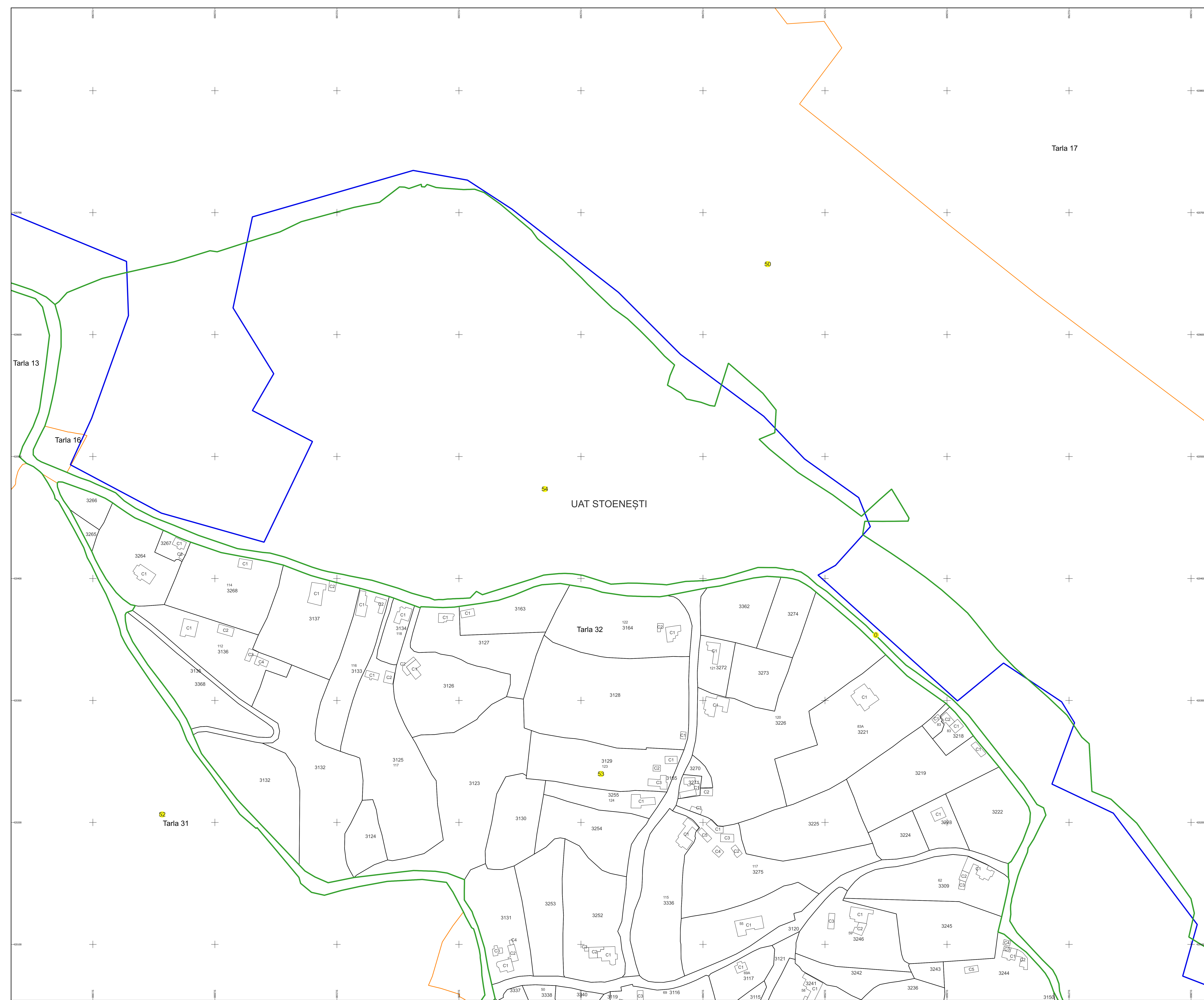
Schema dispunerii planșelor



Legenda	
	LIMITA UAT
	DENUMIRE UAT
	LIMITA SECTOR
	NUMAR SECTOR CADASTRAL
	LIMITA INTRAVILAN
	DENUMIRE INTRAVILAN
	LIMITA CLADIRE
	NUMAR CORP
	LIMITA IMOBIL
	ID IMOBIL
	NUMAR POSTAL
	LIMITA TARLA
	NUMAR TARLA

Semnat electronic de către Ing.  
Mihai-Alexandru Hruza conform  
imputernicirii nr. 154/16.07.2021

Data 11.03.2024



# PLAN CADASTRAL

Comuna Stoenеști, jud. Argeș

Sector cadastral nr. 53

Scara 1:1000

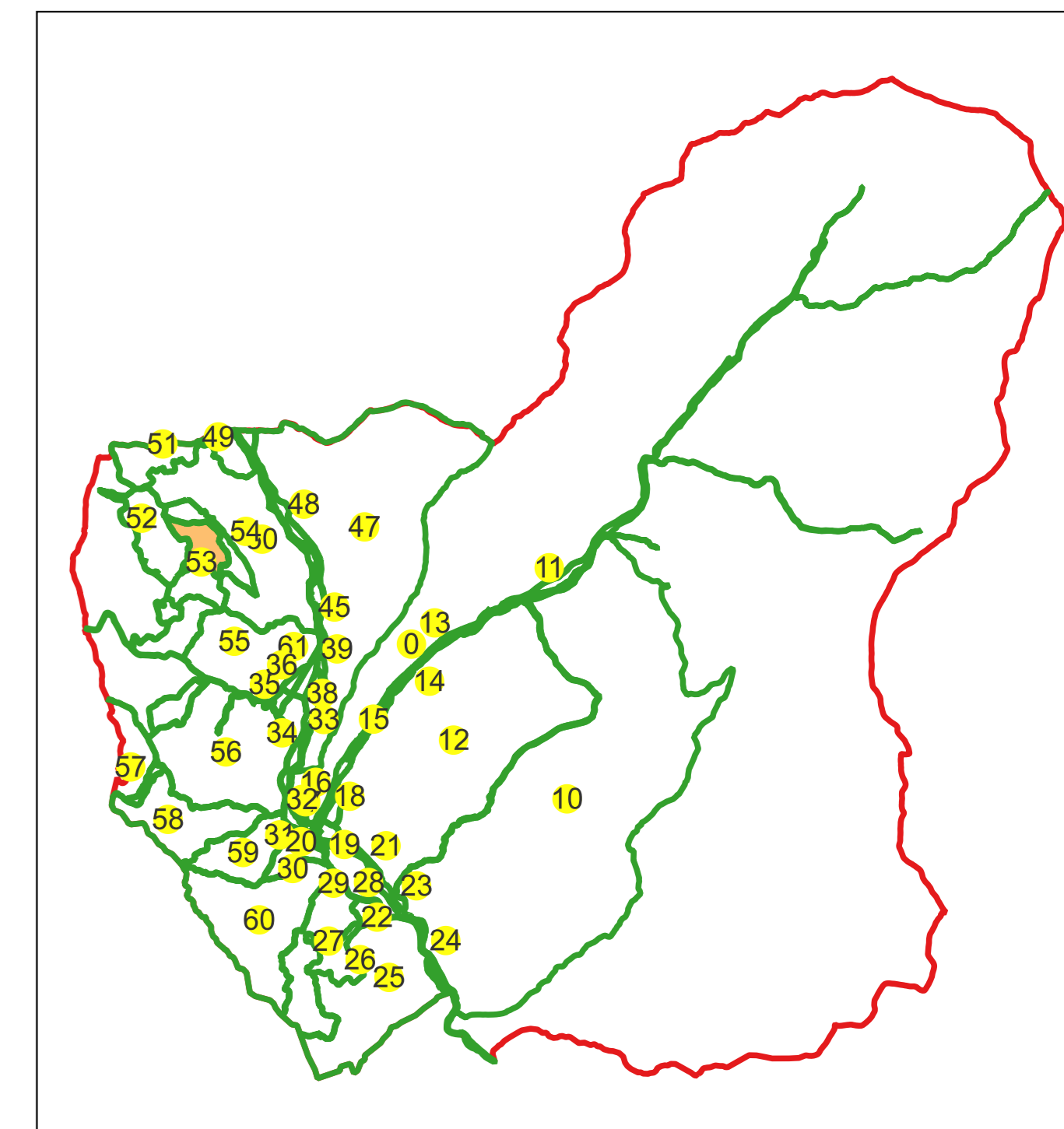
Sistem de proiecție: Stereografic 1970

Planșa nr. 2/2

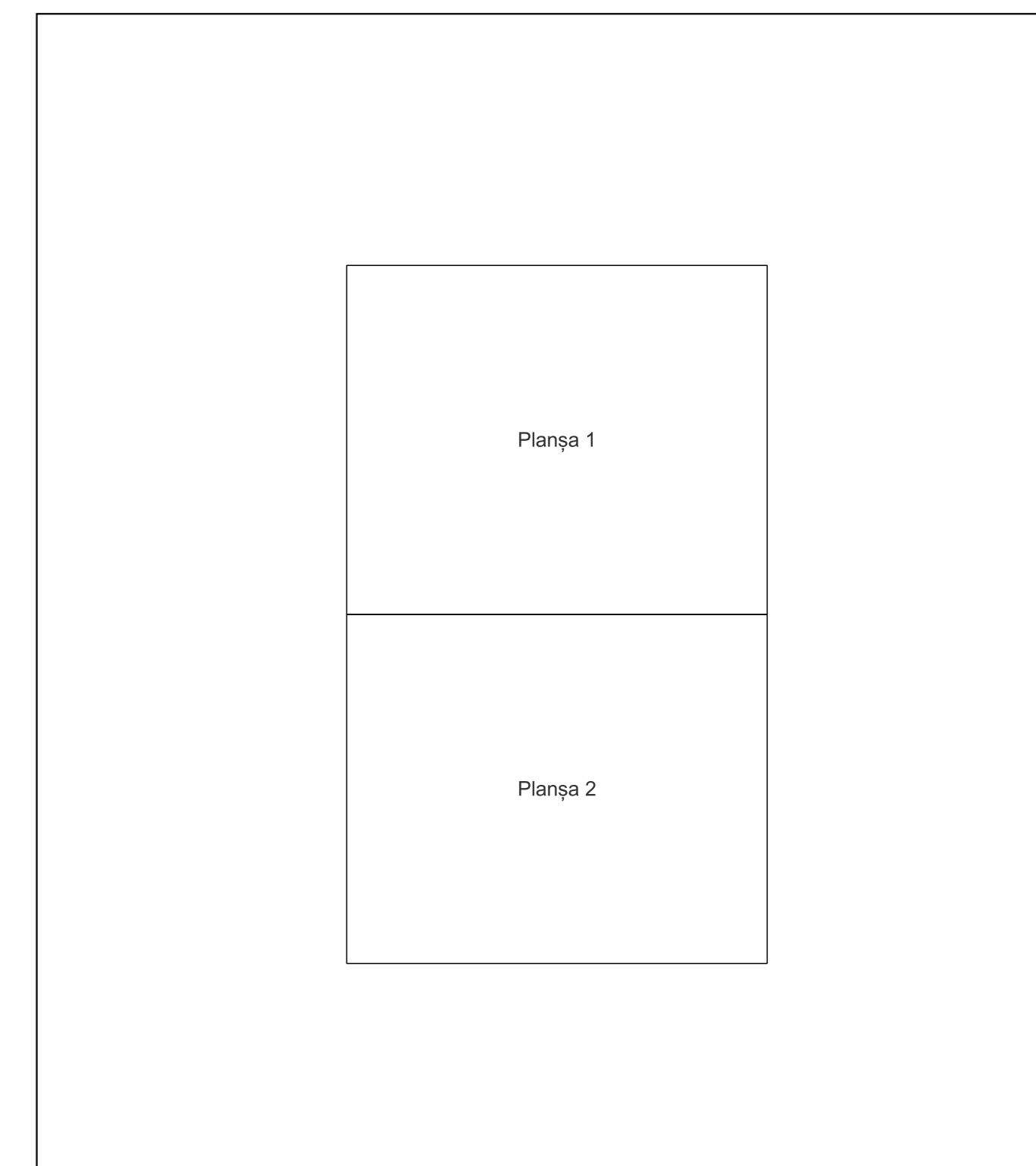
spre publicare



Schema dispunerii sectoarelor cadastrale



Schema dispunerii planșelor

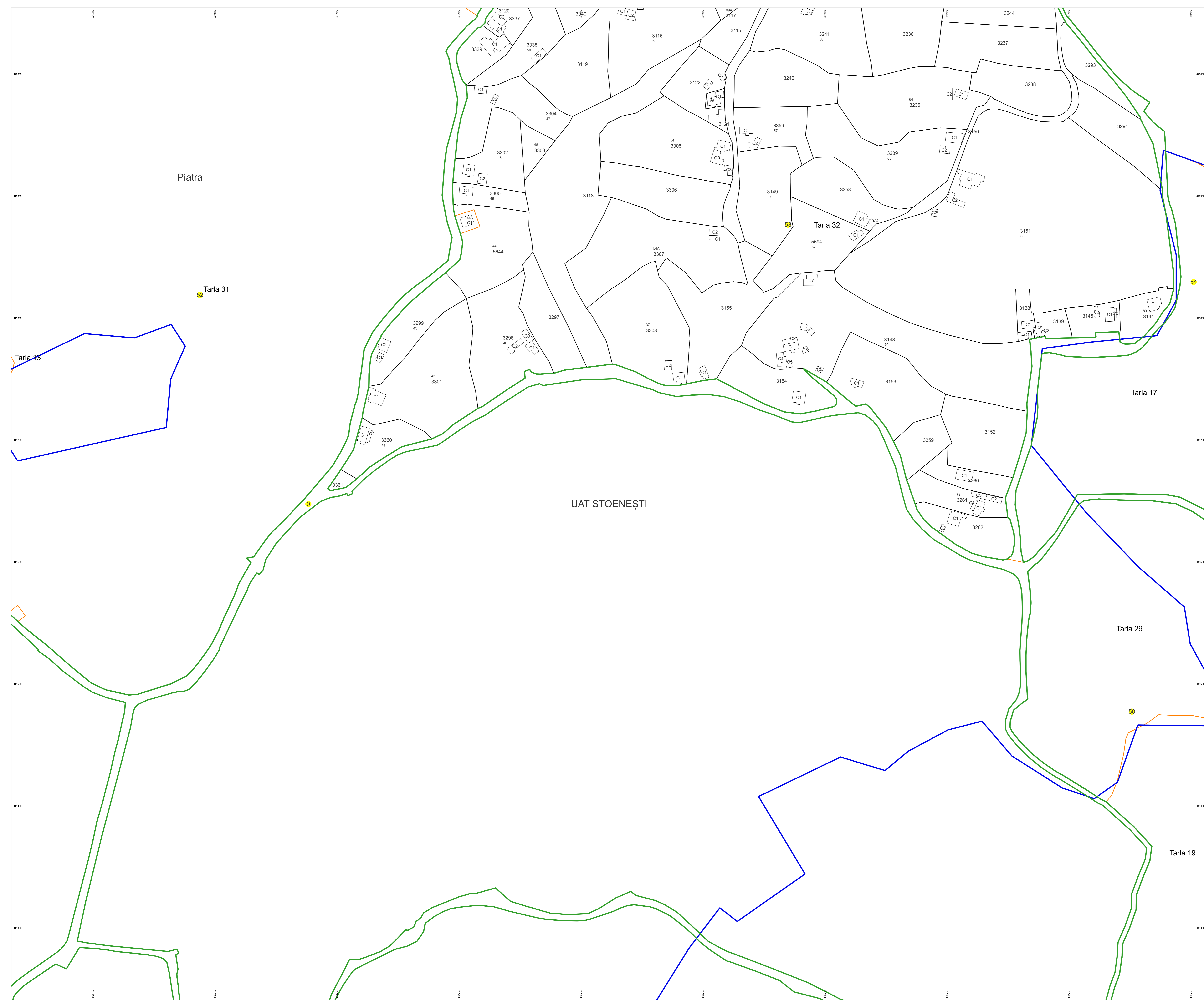


## Legenda

	LIMITA UAT
	DENUMIRE UAT
	LIMITA SECTOR
	NUMAR SECTOR CADASTRAL
	LIMITA INTRAVILAN
	DENUMIRE INTRAVILAN
	LIMITA CLADIRE
	NUMAR CORP
	LIMITA IMOBIL
	ID IMOBIL
	NUMAR POSTAL
	LIMITA TARLA
	NUMAR TARLA

Semnat electronic de către Ing.  
Mihai-Alexandru Hruza conform  
împuțernicirii nr. 154/16.07.2021

Data 11.03.2024



Piatra

Tarla 31

Tarla 32

Tarla 17

UAT STOENEȘTI

Tarla 29

Tarla 19

Tarla 71