

PLAN CADASTRAL

UAT: GILAU

Judet: CLUJ

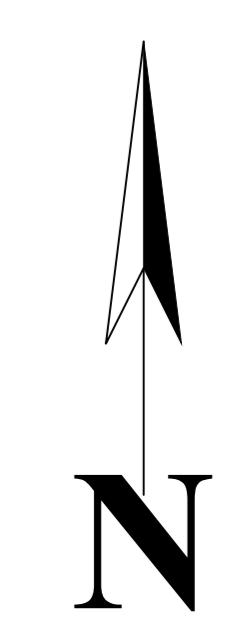
Sectoare cadastrale:

145, 189, 190, 191, 192, 203, 211, 21

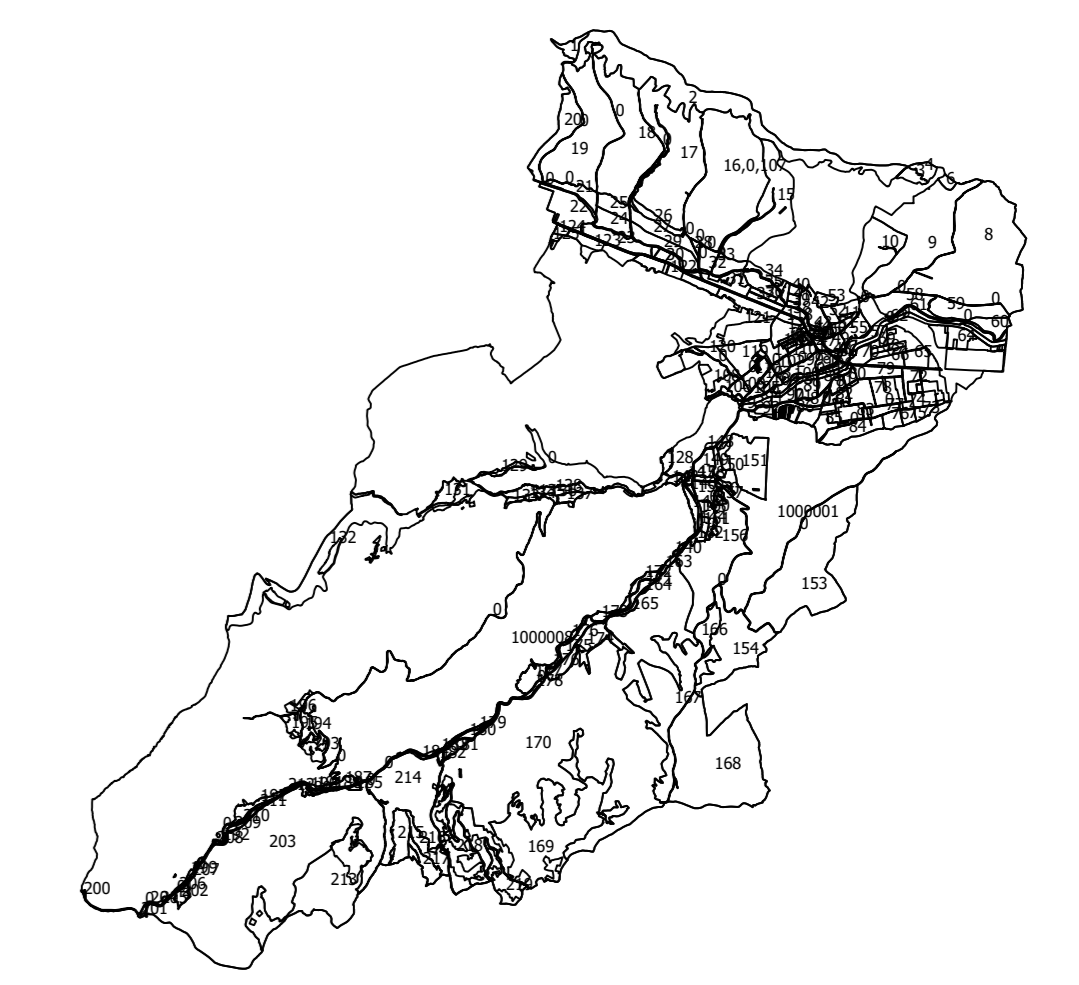
Scara 1:1000

Sistem de proiectie STEREO 1970

Plansa 259



Schita cu dispunerea sectorului



Schema de dispunere a planselor

| | | |
|------------|------------|------------|
| Plansa 241 | Plansa 242 | Plansa 243 |
| Plansa 258 | Plansa 259 | Plansa 260 |
| Plansa 275 | Plansa 276 | Plansa 277 |

Legenda:

| | |
|--|------------------------------------|
| | Limita sector cadastral |
| | Numar sector cadastral |
| | Numar tarla |
| | Limita imobil |
| | Limita constructie |
| | ID imobil |
| | Numar corp constructie |
| | Numar postal |
| | Toponimie |
| | Limita UAT si teritorii invecinate |
| | Limita intravilan |

Executant: S.C. GEOMATICS INTEGRATED SERVICES S.R.L.

Data: Iunie 2025

Acest document a fost semnat electronic de catre Paul-Daniel DUMITRU,
reprezentant al S.C. GEOMATICS INTEGRATED SERVICES S.R.L.

Documente spre publicare

