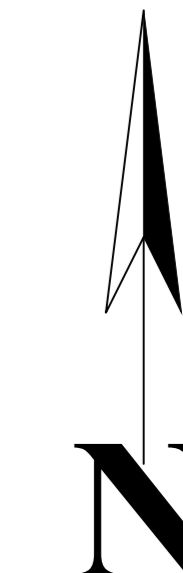
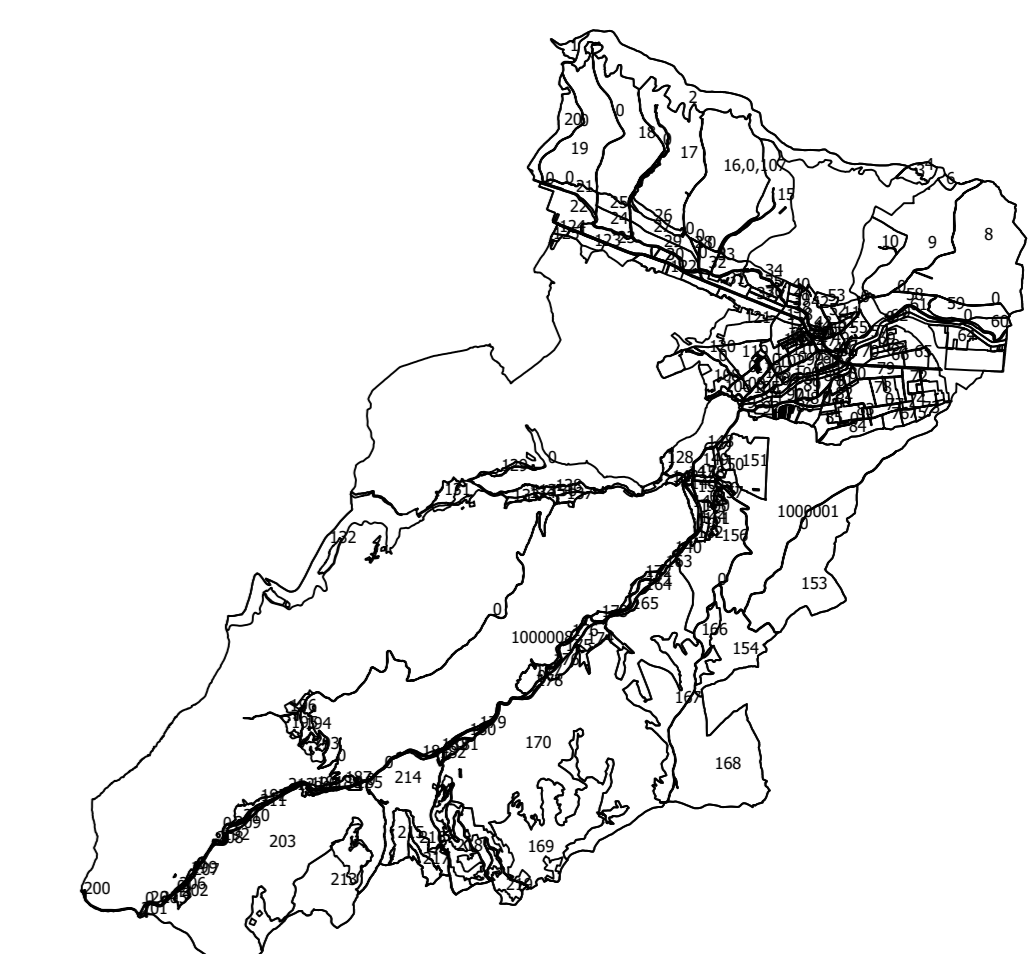


PLAN CADASTRAL
UAT: GILAU
Judet: CLUJ
Sectoare cadastrale:
0, 203, 213, 214, 215, 216, 217
 Scara 1:2000
 Sistem de proiectie STEREO 1970
 Plansa 75



Schita cu dispunerea sectorului



Schema de dispunere a planselor

Plansa 65	Plansa 66	Plansa 67
Plansa 74	Plansa 75	Plansa 76
Plansa 83	Plansa 84	Plansa 85

Legenda:

—	Limita sector cadastral
1	Numar sector cadastral
42	Numar tarla
—	Limita imobil
—	Limita constructie
894	ID imobil
..	Numar corp constructie
..	Numar postal
Parau	Toponimie
—	Limita UAT si teritorii invecinate
—	Limita intravilan

Executant: S.C. GEOMATICS INTEGRATED SERVICES S.R.L.

Data: Iunie 2025

Acest document a fost semnat electronic de catre Paul-Daniel DUMITRU,
 reprezentant al S.C. GEOMATICS INTEGRATED SERVICES S.R.L

Documente spre publicare

