

PLAN CADASTRAL

UAT: GILAU

Judet: CLUJ

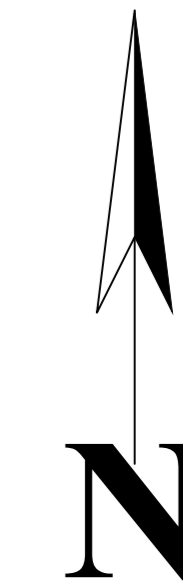
Sectoare cadastrale:

55, 57, 62, 65, 66, 67, 68, 69, 70, 72,

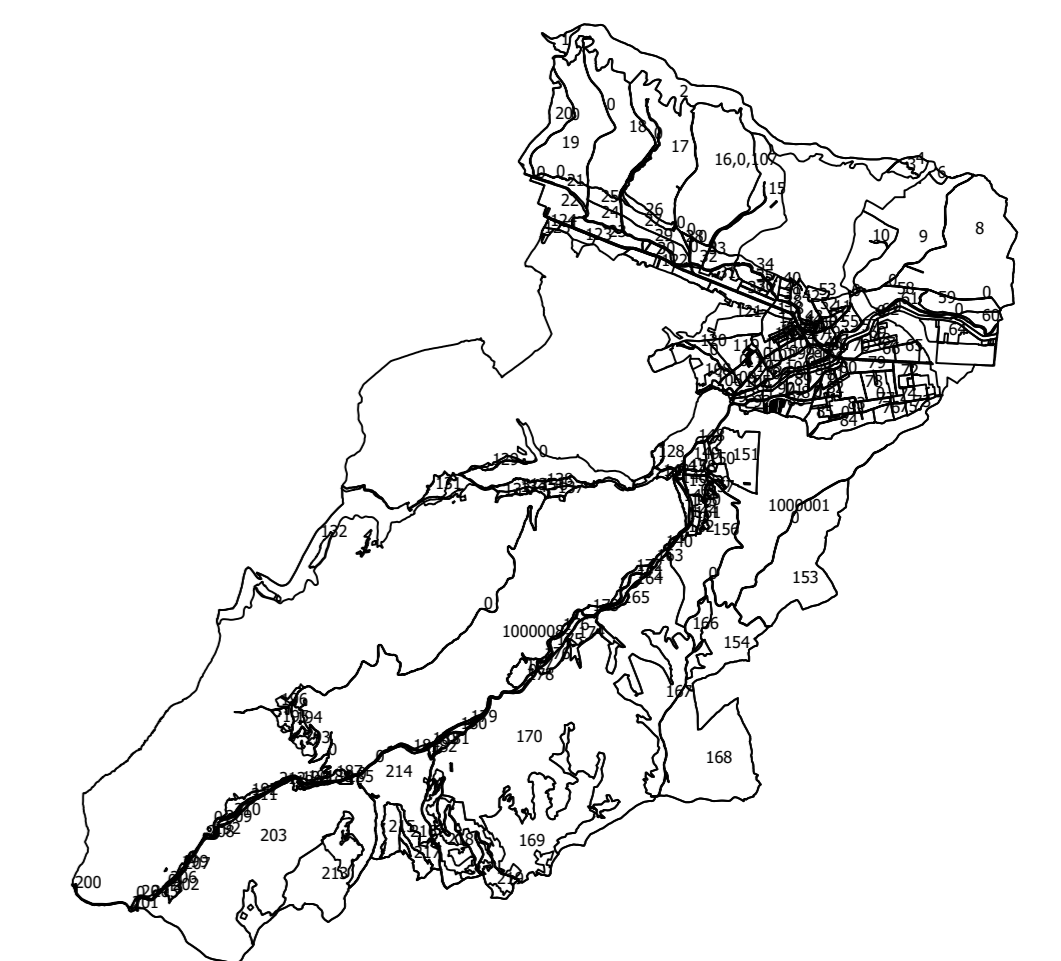
Scara 1:1000

Sistem de proiectie STEREO 1970

Plansa 117



Schita cu dispunerea sectorului



Schema de dispunere a planselor

Plansa 99	Plansa 100	Plansa 101
Plansa 116	Plansa 117	Plansa 118
Plansa 133	Plansa 134	Plansa 135

Legenda:

	Limita sector cadastral
	Numar sector cadastral
	Numar tarla
	Limita imobil
	Limita constructie
	ID imobil
	Numar corp constructie
	Numar postal
	Toponimie
	Limita UAT si teritorii invecinate
	Limita intravilan

Executant: S.C. GEOMATICS INTEGRATED SERVICES S.R.L.

Data: Iunie 2025

Acest document a fost semnat electronic de catre Paul-Daniel DUMITRU,
reprezentant al S.C. GEOMATICS INTEGRATED SERVICES S.R.L.

Documente spre publicare

