

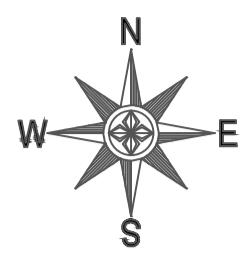
# PLAN CADASTRAL

UAT: Zalha, județul: SĂLAJ, Sect. cad. 30, plansa 1

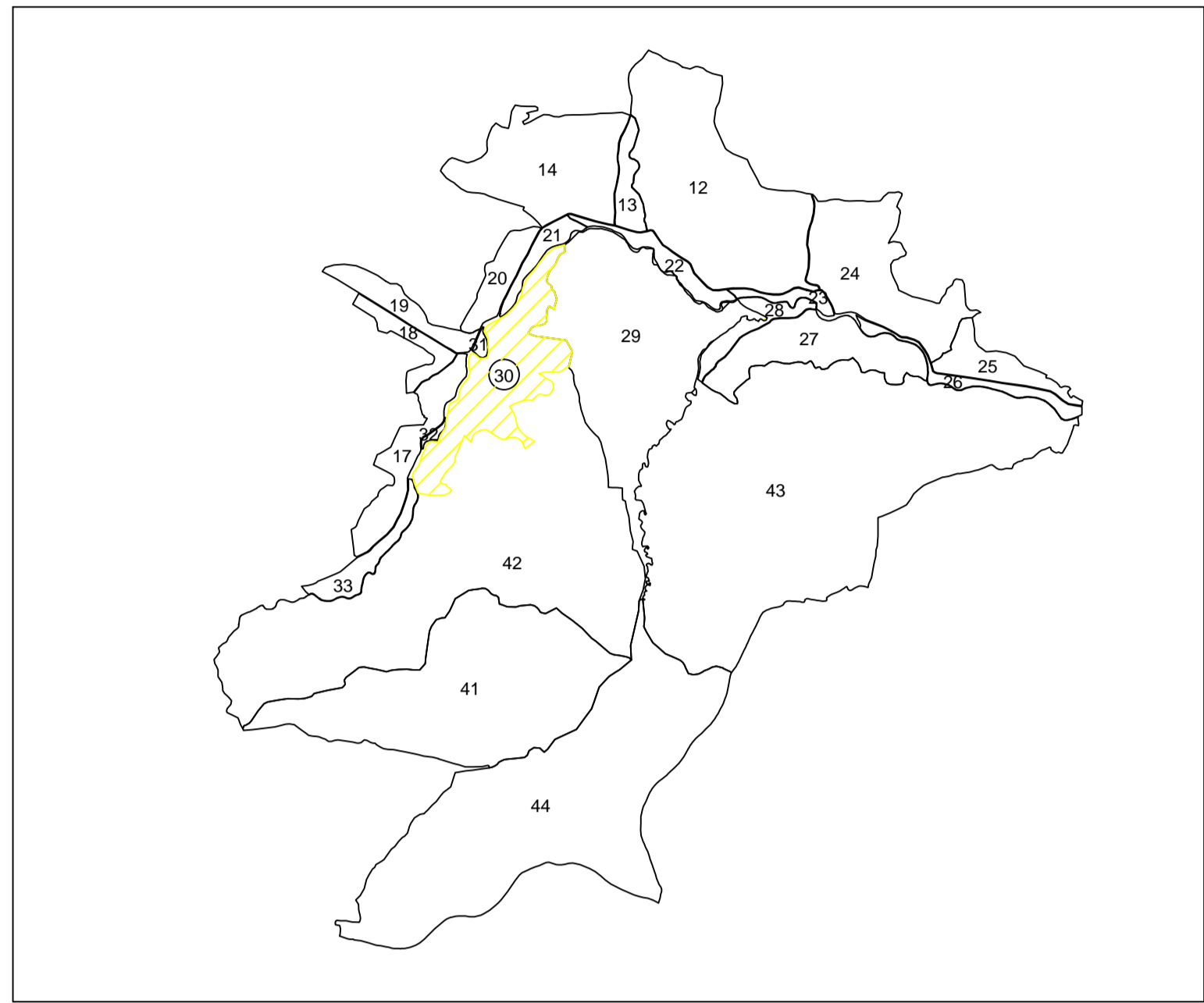
Scara 1:1000

Sistem de proiectie: stereografic 1970

Spre Publicare



### SCHITA CU DISPUNEREA SECTOARELOR CADASTRALE



LEGENDA	
Numar Sector	30
Cod constructie	C1
ID imobil	300
Limita sector	—
Limita imobil	—
Hidrografie	—
Limita UAT	—
Limita intravilan	—
Limita tarla	—
Numar tarla	19
Numar postal	160
Limita constructie	—

P1

P2

20

21

21

29

31

Tarla 19

42

Executant: Cățuna-Grușea Florin  
Autoritate categoria B  
Seria RC-C-F Nr.0284

Data: 15.10.2025