

**PLAN CADASTRAL**  
UAT: Sânpaul, judetul: CLUJ, Sect. cad. 182, plansa 1  
Scara 1:2000  
Sistem de proiectie: stereografic 1970  
Spre Publicare

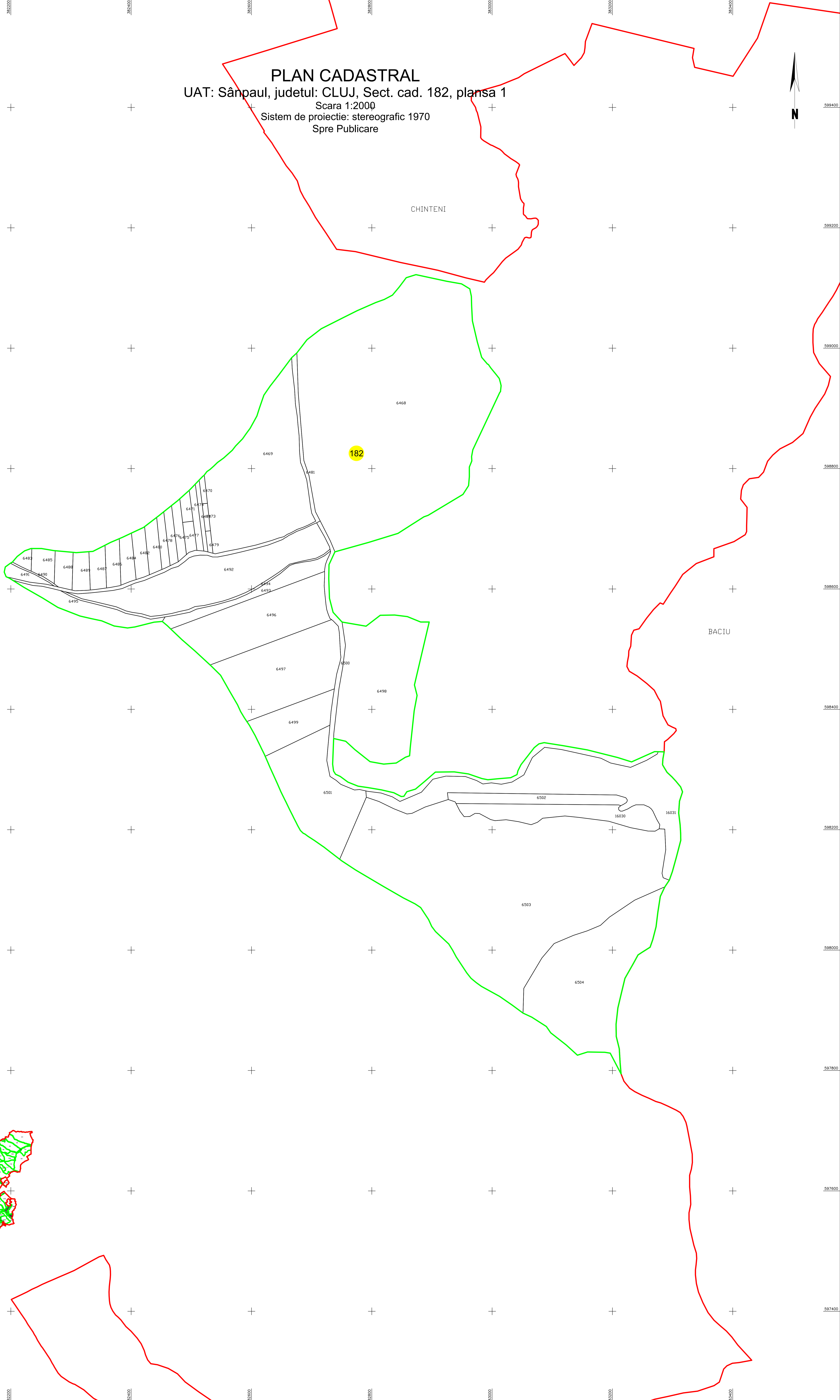


CHINTENI

BACIU

Sumurducu

182



Executant: SC TOTAL BUSINESS LAND SRL  
Data: 01.08.2025

LEGENDA	
Numar Sector	182
Cod constructie	C1
ID imobil	15
Limita sector	—
Limita imobil	—
Hidrografe	—
Limita UAT	—
Limita intravilan	—
Limita sat	—
Numar sat	101
Numar sectii	378
Limita constructie	—