

**DATE DESPRE IMOBILUL NR. 19008**

Oficiul de Cadastru și Publicitate Imobiliară DOLJ  
Biroul de Cadastru și Publicitate Imobiliară Craiova

**A. Partea I. Descrierea imobilului**

TEREN Extravilan

Adresa: Jud. Dolj, T32, P189/2

Nr. Crt	Nr cadastral Nr. topografic	Suprafața* (mp)	Observații / Referințe
A1		327.549	Sector cadastral:25 Teren neimprejmuit; UP 4- UA 12NN, 12A, 12E, 12L, 12B, 12H, 12K, 12D, 12I, 12F, 12C, 12G, 12M, 12J

**B. Partea II. Proprietari și acte**

Inscrieri privitoare la dreptul de proprietate și alte drepturi reale		Referințe
/		
Act Normativ nr. HG nr. 1705, din 21/12/2006 emis de GUVERNUL ROMANIEI;		
B1	Intabulare, drept de PROPRIETATE DOMENIUL PUBLIC AL STATULUI, dobandit prin Lege, cota actuala 1/1, cota initiala 1/1 1) STATUL ROMAN - DOMENIUL PUBLIC, CIF:9999999999999, LIPSA CUI	A1
Act Administrativ nr. Ordin nr. 222, din 02/03/2018 emis de DIRECTIA SILVICA DOLJ (Codul silvic din 2008);		
B2	Intabulare, drept de ADMINISTRARE, dobandit prin Lege, cota actuala 1/1, cota initiala 1/1 1) REGIA NATIONALA A PADURILOR ROMSILVA - DIRECTIA SILVICA DOLJ, CIF:14132010	A1

**C. Partea III. SARCINI .**

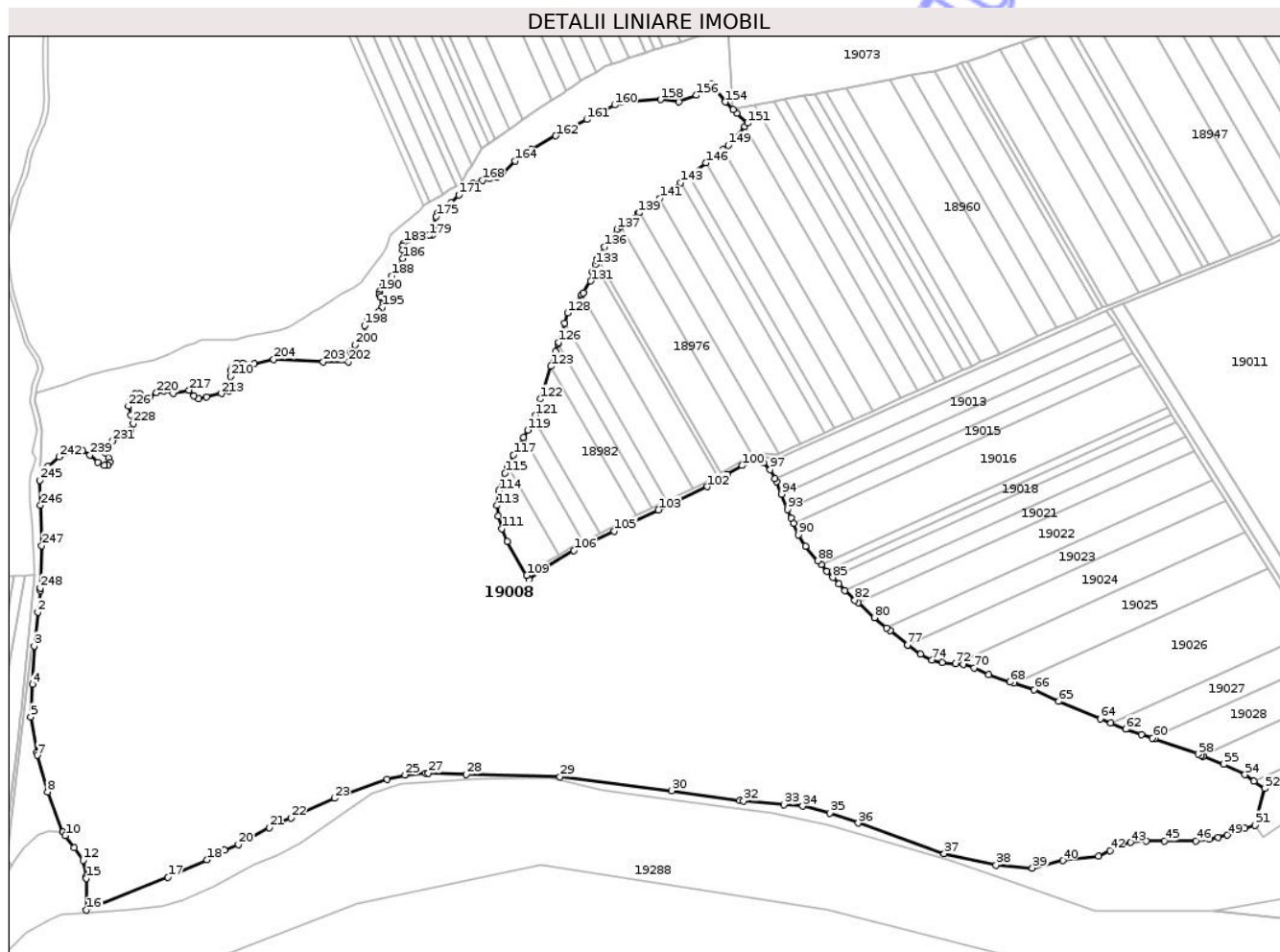
Inscrieri privind dezmembramintele dreptului de proprietate, drepturi reale de garanție și sarcini	Referințe
NU SUNT	

## Anexa Nr. 1 La Partea I

## Teren

Nr cadastral	Suprafața (mp)*	Observații / Referințe
	327.549	UP 4- UA 12NN, 12A, 12E, 12L, 12B, 12H, 12K, 12D, 12I, 12F, 12C, 12G, 12M, 12J

\* Suprafața este determinată în planul de proiecție Stereo 70.



## Date referitoare la teren

Crt	Categorie folosință	Intra vilan	Suprafața (mp)	Tarla	Parcelă	Nr. topo	Observații / Referințe
1	padure	NU	327.549	-	-	-	

## Lungime Segmente

1) Valorile lungimilor segmentelor sunt obținute din proiecție în plan.

Punct început	X / Y	Punct sfârșit	X / Y	Lungime segment	Punct început	X / Y	Punct sfârșit	X / Y	Lungime segment	Punct început	X / Y	Punct sfârșit	X / Y	Lungime segment
1	406.246,707 305.470,929	2	406.244,653 305.451,772	19.267	2	406.244,653 305.451,772	3	406.241,409 305.421,52	30.425	3	406.241,409 305.421,52	4	406.239,729 305.387,197	34.364
4	406.239,729 305.387,197	5	406.238,314 305.358,288	28.944	5	406.238,314 305.358,288	6	406.243,687 305.326,043	32.69	6	406.243,687 305.326,043	7	406.244,044 305.323,901	2.172
7	406.244,044 305.323,901	8	406.253,292 305.291,268	33.918	8	406.253,292 305.291,268	9	406.267,027 305.255,427	38.383	9	406.267,027 305.255,427	10	406.269,306 305.252,27	3.894
10	406.269,306 305.252,27	11	406.277,183 305.241,356	13.46	11	406.277,183 305.241,356	12	406.285,131 305.230,344	13.581	12	406.285,131 305.230,344	13	406.287,877 305.215,781	14.82
13	406.287,877 305.215,781	14	406.287,948 305.215,407	0.381	14	406.287,948 305.215,407	15	406.288,178 305.214,188	1.241	15	406.288,178 305.214,188	16	406.288,178 305.185,727	28.461
16	406.288,178 305.185,727	17	406.360,921 305.215,233	78.499	17	406.360,921 305.215,233	18	406.395,873 305.230,587	38.176	18	406.395,873 305.230,587	19	406.411,648 305.239,45	18.094

Punct început	X / Y	Punct sfârșit	X / Y	Lungime segment	Punct început	X / Y	Punct sfârșit	X / Y	Lungime segment	Punct început	X / Y	Punct sfârșit	X / Y	Lungime segment
19	406.411,648 305.239,45	20	406.423,813 305.244,396	13.13 2	20	406.423,813 305.244,396	21	406.451,53 305.259,233	31.43 8	21	406.451,53 305.259,233	22	406.470,993 305.268,051	21.36 7
22	406.470,993 305.268,051	23	406.509,656 305.285,57	42.44 7	23	406.509,656 305.285,57	24	406.557,036 305.302,706	50.38 4	24	406.557,036 305.302,706	25	406.572,811 305.306,416	16.20 5
25	406.572,811 305.306,416	26	406.591,355 305.307,947	18.60 7	26	406.591,355 305.307,947	27	406.593,747 305.307,88	2.393	27	406.593,747 305.307,88	28	406.627,661 305.306,931	33.92 7
28	406.627,661 305.306,931	29	406.711,449 305.304,585	83.82 1	29	406.711,449 305.304,585	30	406.811,273 305.292,358	100.5 7	30	406.811,273 305.292,358	31	406.871,918 305.283,637	61.26 9
31	406.871,918 305.283,637	32	406.875,537 305.283,117	3.656	32	406.875,537 305.283,117	33	406.911,51 305.279,955	36.11 2	33	406.911,51 305.279,955	34	406.928,295 305.278,479	16.85
34	406.928,295 305.278,479	35	406.952,58 305.272,518	25.00 6	35	406.952,58 305.272,518	36	406.978,005 305.263,491	26.98	36	406.978,005 305.263,491	37	407.054,843 305.236,212	81.53 7
37	407.054,843 305.236,212	38	407.101,24 305.225,891	47.53 1	38	407.101,24 305.225,891	39	407.133,715 305.223,273	32.58	39	407.133,715 305.223,273	40	407.160,84 305.229,96	27.93 7
40	407.160,84 305.229,96	41	407.192,62 305.233,74	32.00 4	41	407.192,62 305.233,74	42	407.202,974 305.238,92	11.57 7	42	407.202,974 305.238,92	43	407.221,356 305.246,113	19.73 9
43	407.221,356 305.246,113	44	407.235,357 305.247,598	14.08	44	407.235,357 305.247,598	45	407.251,627 305.247,598	16.27	45	407.251,627 305.247,598	46	407.279,708 305.247,598	28.08 1
46	407.279,708 305.247,598	47	407.291,775 305.248,93	12.14	47	407.291,775 305.248,93	48	407.299,63 305.250,762	8.066	48	407.299,63 305.250,762	49	407.307,86 305.252,681	8.451
49	407.307,86 305.252,681	50	407.323,677 305.258,71	16.92 7	50	407.323,677 305.258,71	51	407.332,455 305.261,611	9.245	51	407.332,455 305.261,611	52	407.341,317 305.294,177	33.75
52	407.341,317 305.294,177	53	407.331,66 305.301,014	11.83 2	53	407.331,66 305.301,014	54	407.323,757 305.306,609	9.683	54	407.323,757 305.306,609	55	407.304,603 305.315,874	21.27 7
55	407.304,603 305.315,874	56	407.286,405 305.323,138	19.59 4	56	407.286,405 305.323,138	57	407.284,857 305.323,756	1.667	57	407.284,857 305.323,756	58	407.281,896 305.324,938	3.188
58	407.281,896 305.324,938	59	407.242,826 305.338,841	41.47	59	407.242,826 305.338,841	60	407.241,051 305.339,407	1.863	60	407.241,051 305.339,407	61	407.231,062 305.342,595	10.48 5
61	407.231,062 305.342,595	62	407.217,043 305.347,188	14.75 2	62	407.217,043 305.347,188	63	407.203,828 305.352,673	14.30 8	63	407.203,828 305.352,673	64	407.194,303 305.356,626	10.31 3
64	407.194,303 305.356,626	65	407.157,262 305.372,148	40.16 2	65	407.157,262 305.372,148	66	407.135,26 305.382,377	24.26 4	66	407.135,26 305.382,377	67	407.117,432 305.388,115	18.72 9
67	407.117,432 305.388,115	68	407.113,696 305.389,317	3.925	68	407.113,696 305.389,317	69	407.094,619 305.395,747	20.13 1	69	407.094,619 305.395,747	70	407.081,569 305.402,074	14.50 3
70	407.081,569 305.402,074	71	407.071,994 305.404,996	10.01 1	71	407.071,994 305.404,996	72	407.064,814 305.405,606	7.206	72	407.064,814 305.405,606	73	407.053,062 305.406,604	11.79 4
73	407.053,062 305.406,604	74	407.043,925 305.409,014	9.449	74	407.043,925 305.409,014	75	407.033,692 305.414,056	11.40 8	75	407.033,692 305.414,056	76	407.022,412 305.422,339	13.99 5
76	407.022,412 305.422,339	77	407.022,096 305.422,597	0.408	77	407.022,096 305.422,597	78	407.006,573 305.435,243	20.02 2	78	407.006,573 305.435,243	79	407.003,452 305.437,785	4.025
79	407.003,452 305.437,785	80	406.992,352 305.446,828	14.31 7	80	406.992,352 305.446,828	81	406.977,823 305.459,952	19.57 9	81	406.977,823 305.459,952	82	406.974,986 305.462,515	3.823
82	406.974,986 305.462,515	83	406.966,251 305.471,251	12.35 4	83	406.966,251 305.471,251	84	406.960,478 305.477,025	8.165	84	406.960,478 305.477,025	85	406.955,354 305.482,683	7.633
85	406.955,354 305.482,683	86	406.950,133 305.488,448	7.778	86	406.950,133 305.488,448	87	406.944,933 305.494,19	7.747	87	406.944,933 305.494,19	88	406.941,794 305.497,657	4.677
88	406.941,794 305.497,657	89	406.930,835 305.510,652	16.99 9	89	406.930,835 305.510,652	90	406.924,647 305.520,906	11.97 6	90	406.924,647 305.520,906	91	406.920,02 305.531,073	11.17
91	406.920,02 305.531,073	92	406.917,817 305.535,912	5.317	92	406.917,817 305.535,912	93	406.914,912 305.543,28	7.92	93	406.914,912 305.543,28	94	406.909,474 305.557,072	14.82 5
94	406.909,474 305.557,072	95	406.905,058 305.568,27	12.03 7	95	406.905,058 305.568,27	96	406.903,683 305.570,836	2.911	96	406.903,683 305.570,836	97	406.899,345 305.578,929	9.182
97	406.899,345 305.578,929	98	406.893,442 305.585,21	8.62	98	406.893,442 305.585,21	99	406.888,778 305.587,708	5.291	99	406.888,778 305.587,708	100	406.874,174 305.582,561	15.48 4
100	406.874,174 305.582,561	101	406.861,066 305.574,514	15.38 1	101	406.861,066 305.574,514	102	406.843,056 305.563,703	21.00 6	102	406.843,056 305.563,703	103	406.799,5 305.542,966	48.24 1
103	406.799,5 305.542,966	104	406.770,581 305.529,198	32.02 9	104	406.770,581 305.529,198	105	406.759,905 305.524,115	11.82 4	105	406.759,905 305.524,115	106	406.723,742 305.506,898	40.05 2
106	406.723,742 305.506,898	107	406.698,652 305.491,832	29.26 6	107	406.698,652 305.491,832	108	406.683,859 305.480,697	18.51 5	108	406.683,859 305.480,697	109	406.681,66 305.484,489	4.383
109	406.681,66 305.484,489	110	406.664,106 305.514,758	34.99 1	110	406.664,106 305.514,758	111	406.659,231 305.526,33	12.55 7	111	406.659,231 305.526,33	112	406.656,422 305.537,466	11.48 5
112	406.656,422 305.537,466	113	406.655,111 305.547,01	9.634	113	406.655,111 305.547,01	114	406.656,797 305.560,111	13.20 9	114	406.656,797 305.560,111	115	406.662,227 305.576,018	16.80 8
115	406.662,227 305.576,018	116	406.664,834 305.581,532	6.099	116	406.664,834 305.581,532	117	406.669,725 305.591,878	11.44 4	117	406.669,725 305.591,878	118	406.678,859 305.607,756	18.31 8

Punct început	X / Y	Punct sfârșit	X / Y	Lungime segment	Punct început	X / Y	Punct sfârșit	X / Y	Lungime segment	Punct început	X / Y	Punct sfârșit	X / Y	Lungime segment
118	406.678,859 305.607,756	119	406.682,645 305.614,336	7.591	119	406.682,645 305.614,336	120	406.687,801 305.624,281	11.202	120	406.687,801 305.624,281	121	406.689,418 305.627,4	3.513
121	406.689,418 305.627,4	122	406.694,074 305.641,991	15.316	122	406.694,074 305.641,991	123	406.703,386 305.671,174	30.633	123	406.703,386 305.671,174	124	406.707,584 305.684,327	13.807
124	406.707,584 305.684,327	125	406.709,693 305.691,274	7.26	125	406.709,693 305.691,274	126	406.710,093 305.692,591	1.376	126	406.710,093 305.692,591	127	406.715,344 305.709,879	18.068
127	406.715,344 305.709,879	128	406.718,051 305.718,792	9.315	128	406.718,051 305.718,792	129	406.730,812 305.734,974	20.608	129	406.730,812 305.734,974	130	406.732,387 305.736,971	2.543
130	406.732,387 305.736,971	131	406.739,034 305.747,264	12.253	131	406.739,034 305.747,264	132	406.740,533 305.755,873	8.739	132	406.740,533 305.755,873	133	406.742,985 305.762,118	6.709
133	406.742,985 305.762,118	134	406.744,465 305.765,886	4.048	134	406.744,465 305.765,886	135	406.744,998 305.766,85	1.102	135	406.744,998 305.766,85	136	406.751,113 305.777,916	12.643
136	406.751,113 305.777,916	137	406.762,442 305.793,637	19.378	137	406.762,442 305.793,637	138	406.765,877 305.796,242	4.311	138	406.765,877 305.796,242	139	406.781,376 305.807,993	19.45
139	406.781,376 305.807,993	140	406.782,576 305.808,804	1.448	140	406.782,576 305.808,804	141	406.800,478 305.820,903	21.607	141	406.800,478 305.820,903	142	406.807,683 305.825,773	8.696
142	406.807,683 305.825,773	143	406.819,396 305.835,235	15.057	143	406.819,396 305.835,235	144	406.826,697 305.841,133	9.386	144	406.826,697 305.841,133	145	406.831,487 305.845,003	6.158
145	406.831,487 305.845,003	146	406.841,968 305.852,804	13.065	146	406.841,968 305.852,804	147	406.849,088 305.858,103	8.875	147	406.849,088 305.858,103	148	406.856,83 305.864,572	10.089
148	406.856,83 305.864,572	149	406.861,633 305.868,584	6.258	149	406.861,633 305.868,584	150	406.876,459 305.885,331	22.367	150	406.876,459 305.885,331	151	406.879,05 305.888,259	3.91
151	406.879,05 305.888,259	152	406.869,639 305.897,138	12.938	152	406.869,639 305.897,138	153	406.866,012 305.900,56	4.987	153	406.866,012 305.900,56	154	406.859,016 305.907,161	9.619
154	406.859,016 305.907,161	155	406.846,657 305.923,162	20.218	155	406.846,657 305.923,162	156	406.833,456 305.913,15	16.568	156	406.833,456 305.913,15	157	406.817,416 305.907,363	17.052
157	406.817,416 305.907,363	158	406.801,329 305.909,278	16.201	158	406.801,329 305.909,278	159	406.775,621 305.908,086	25.736	159	406.775,621 305.908,086	160	406.760,173 305.904,55	15.848
160	406.760,173 305.904,55	161	406.735,403 305.891,549	27.975	161	406.735,403 305.891,549	162	406.707,644 305.876,981	31.349	162	406.707,644 305.876,981	163	406.686,051 305.864,7	24.841
163	406.686,051 305.864,7	164	406.671,187 305.854,366	18.103	164	406.671,187 305.854,366	165	406.660,748 305.843,933	14.759	165	406.660,748 305.843,933	166	406.655,081 305.839,939	6.933
166	406.655,081 305.839,939	167	406.648,699 305.838,687	6.504	167	406.648,699 305.838,687	168	406.641,899 305.837,316	6.937	168	406.641,899 305.837,316	169	406.633,72 305.834,419	8.677
169	406.633,72 305.834,419	170	406.627,1 305.830,365	7.763	170	406.627,1 305.830,365	171	406.620,897 305.824,106	8.812	171	406.620,897 305.824,106	172	406.614,097 305.817,011	9.827
172	406.614,097 305.817,011	173	406.607,416 305.812,003	8.35	173	406.607,416 305.812,003	174	406.602,465 305.807,949	6.399	174	406.602,465 305.807,949	175	406.600,676 305.805,028	3.425
175	406.600,676 305.805,028	176	406.598,237 305.796,507	8.863	176	406.598,237 305.796,507	177	406.598,237 305.789,941	6.566	177	406.598,237 305.789,941	178	406.597,351 305.788,43	1.752
178	406.597,351 305.788,43	179	406.594,171 305.787,779	3.246	179	406.594,171 305.787,779	180	406.585,165 305.786,235	9.137	180	406.585,165 305.786,235	181	406.578,23 305.785,662	6.959
181	406.578,23 305.785,662	182	406.574,945 305.783,812	3.77	182	406.574,945 305.783,812	183	406.571,87 305.781,05	4.133	183	406.571,87 305.781,05	184	406.570,958 305.778,835	2.395
184	406.570,958 305.778,835	185	406.570,958 305.775,041	3.794	185	406.570,958 305.775,041	186	406.570,958 305.767,486	7.555	186	406.570,958 305.767,486	187	406.567,071 305.760,696	7.824
187	406.567,071 305.760,696	188	406.561,362 305.752,046	10.364	188	406.561,362 305.752,046	189	406.553,593 305.742,941	11.969	189	406.553,593 305.742,941	190	406.550,387 305.738,303	5.638
190	406.550,387 305.738,303	191	406.549,709 305.735,073	3.3	191	406.549,709 305.735,073	192	406.550,668 305.733,038	2.25	192	406.550,668 305.733,038	193	406.553,806 305.728,83	5.249
193	406.553,806 305.728,83	194	406.553,806 305.726,841	1.989	194	406.553,806 305.726,841	195	406.552,506 305.724,011	3.114	195	406.552,506 305.724,011	196	406.549,214 305.720,185	5.047
196	406.549,214 305.720,185	197	406.539,416 305.712,228	12.622	197	406.539,416 305.712,228	198	406.536,881 305.707,756	5.141	198	406.536,881 305.707,756	199	406.537,876 305.699,111	8.702
199	406.537,876 305.699,111	200	406.528,078 305.690,542	13.016	200	406.528,078 305.690,542	201	406.524,557 305.684,498	6.995	201	406.524,557 305.684,498	202	406.522,414 305.675,082	9.657
202	406.522,414 305.675,082	203	406.499,732 305.675,082	22.682	203	406.499,732 305.675,082	204	406.455,514 305.677,205	44.269	204	406.455,514 305.677,205	205	406.438,109 305.673,75	17.745
205	406.438,109 305.673,75	206	406.427,79 305.674,029	10.323	206	406.427,79 305.674,029	207	406.422,558 305.674,029	5.232	207	406.422,558 305.674,029	208	406.418,846 305.671,366	4.568
208	406.418,846 305.671,366	209	406.416,848 305.667,467	4.381	209	406.416,848 305.667,467	210	406.416,848 305.662,237	5.23	210	406.416,848 305.662,237	211	406.417,884 305.652,637	9.656
211	406.417,884 305.652,637	212	406.415,607 305.649,223	4.104	212	406.415,607 305.649,223	213	406.408,788 305.646,837	7.224	213	406.408,788 305.646,837	214	406.395,339 305.643,874	13.772
214	406.395,339 305.643,874	215	406.388,622 305.642,395	6.878	215	406.388,622 305.642,395	216	406.384,295 305.644,785	4.943	216	406.384,295 305.644,785	217	406.379,855 305.650,02	6.864

Punct început	X / Y	Punct sfârșit	X / Y	Lungime segment	Punct început	X / Y	Punct sfârșit	X / Y	Lungime segment	Punct început	X / Y	Punct sfârșit	X / Y	Lungime segment
217	406.379,855 305.650,02	218	406.365,85 305.647,175	14.291	218	406.365,85 305.647,175	219	406.357,083 305.649,223	9.003	219	406.357,083 305.649,223	220	406.350,822 305.647,63	6.46
220	406.350,822 305.647,63	221	406.344,673 305.643,874	7.205	221	406.344,673 305.643,874	222	406.341,03 305.643,874	3.643	222	406.341,03 305.643,874	223	406.335,905 305.646,606	5.808
223	406.335,905 305.646,606	224	406.331,465 305.646,606	4.44	224	406.331,465 305.646,606	225	406.328,164 305.643,647	4.433	225	406.328,164 305.643,647	226	406.325,55 305.635,599	8.462
226	406.325,55 305.635,599	227	406.327,821 305.627,715	8.205	227	406.327,821 305.627,715	228	406.329,986 305.620,203	7.818	228	406.329,986 305.620,203	229	406.327,322 305.614,028	6.725
229	406.327,322 305.614,028	230	406.320,409 305.610,033	7.984	230	406.320,409 305.610,033	231	406.310,958 305.604,57	10.916	231	406.310,958 305.604,57	232	406.305,152 305.598,767	8.209
232	406.305,152 305.598,767	233	406.305,152 305.593,645	5.122	233	406.305,152 305.593,645	234	406.307,884 305.589,321	5.115	234	406.307,884 305.589,321	235	406.309,136 305.585,338	4.175
235	406.309,136 305.585,338	236	406.307,314 305.582,606	3.284	236	406.307,314 305.582,606	237	406.304,241 305.582,606	3.073	237	406.304,241 305.582,606	238	406.298,319 305.585,565	6.62
238	406.298,319 305.585,565	239	406.291,375 305.591,938	9.425	239	406.291,375 305.591,938	240	406.284,999 305.595,58	7.343	240	406.284,999 305.595,58	241	406.277,256 305.595,58	7.743
241	406.277,256 305.595,58	242	406.263,935 305.590,345	14.313	242	406.263,935 305.590,345	243	406.253,459 305.581,924	13.441	243	406.253,459 305.581,924	244	406.249,674 305.576,487	6.625
244	406.249,674 305.576,487	245	406.246,385 305.569,548	7.679	245	406.246,385 305.569,548	246	406.247,116 305.547,123	22.437	246	406.247,116 305.547,123	247	406.248,287 305.511,214	35.928
247	406.248,287 305.511,214	248	406.246,967 305.473,35	37.887	248	406.246,967 305.473,35	1	406.246,707 305.470,929	2.435					

\*\* Lungimile segmentelor sunt determinate în planul de proiecție Stereo 70 și sunt rotunjite la 1 milimetru.

\*\*\* Distanța dintre puncte este formată din segmente cumulate ce sunt mai mici decât valoarea 1 milimetru.



**DATE DESPRE IMOBILUL NR. 19009**

Oficiul de Cadastru și Publicitate Imobiliară DOLJ  
Biroul de Cadastru și Publicitate Imobiliară Craiova

**A. Partea I. Descrierea imobilului**

TEREN Extravilan

Adresa: Jud. Dolj, T32, P189/1

Nr. Crt	Nr cadastral Nr. topografic	Suprafața* (mp)	Observații / Referințe
A1		8.957	Sector cadastral:25 Teren neimprejmuit;

**B. Partea II. Proprietari și acte**

Inscrieri privitoare la dreptul de proprietate și alte drepturi reale	Referințe
/	
Act Administrativ nr. Adeverinta de insusire nr. 24.325, din 10/12/2024 emis de PRIMARIA COMUNEI MALU MARE;	
B1	Inscrierea posesiei, drept de PROPRIETATE, dobandit prin Lege, cota actuala 1/1, cota initiala 1/1 1) <b>NEIDENTIFICAT NEIDENTIFICAT</b> , CIF:0000000000000
Act Normativ nr. Legea 7, din 13/03/1996 emis de PARLAMENTUL ROMANIEI (art.13);	
B2	Se notează mențiunea de proprietar neidentificat.

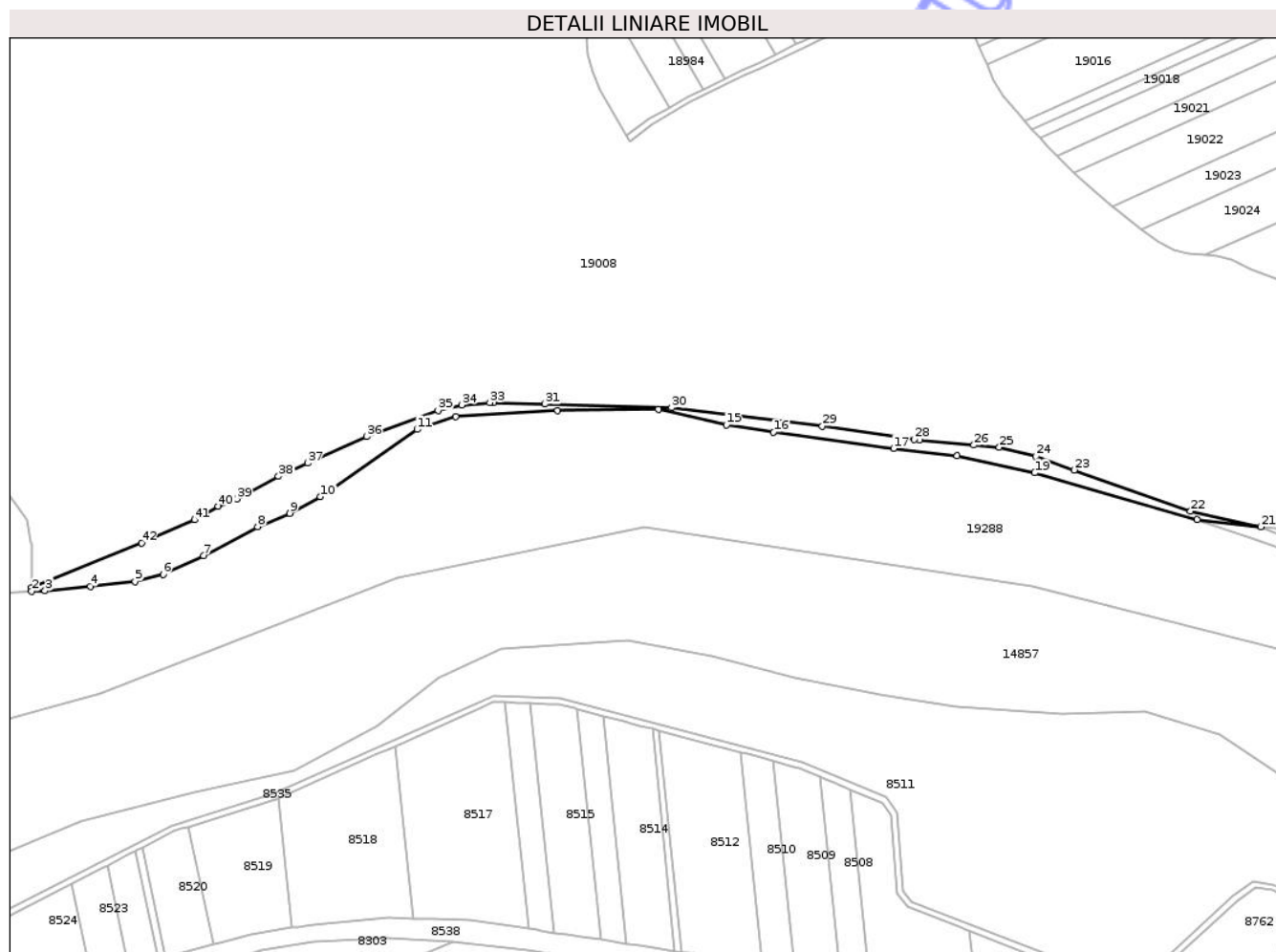
**C. Partea III. SARCINI .**

Inscrieri privind dezmembramintele dreptului de proprietate, drepturi reale de garanție și sarcini	Referințe
NU SUNT	

**Teren**

Nr cadastral	Suprafața (mp)*	Observații / Referințe
	8.957	

\* Suprafața este determinată în planul de proiecție Stereo 70.



**Date referitoare la teren**

Crt	Categorie folosință	Intravilan	Suprafața (mp)	Tarla	Parcelă	Nr. topo	Observații / Referințe
1	pasune	NU	8.957	32	189/1	-	

**Lungime Segmente**

1) Valorile lungimilor segmentelor sunt obținute din proiecție în plan.

Punct început	X / Y	Punct sfârșit	X / Y	Lungime segment	Punct început	X / Y	Punct sfârșit	X / Y	Lungime segment	Punct început	X / Y	Punct sfârșit	X / Y	Lungime segment
1	406.288,178 305.185,727	2	406.288,221 305.183,274	2.453	2	406.288,221 305.183,274	3	406.297,036 305.183,728	8.827	3	406.297,036 305.183,728	4	406.327,073 305.186,54	30.168
4	406.327,073 305.186,54	5	406.356,63 305.189,831	29.74	5	406.356,63 305.189,831	6	406.375,164 305.194,625	19.144	6	406.375,164 305.194,625	7	406.401,977 305.206,815	29.454
7	406.401,977 305.206,815	8	406.437,76 305.226,049	40.625	8	406.437,76 305.226,049	9	406.459,054 305.234,826	23.032	9	406.459,054 305.234,826	10	406.479,315 305.245,724	23.006
10	406.479,315 305.245,724	11	406.543,234 305.290,291	77.922	11	406.543,234 305.290,291	12	406.568,561 305.298,685	26.682	12	406.568,561 305.298,685	13	406.636,194 305.302,733	67.754
13	406.636,194 305.302,733	14	406.702,688 305.303,615	66.5	14	406.702,688 305.303,615	15	406.747,846 305.293,259	46.33	15	406.747,846 305.293,259	16	406.778,994 305.288,375	31.529
16	406.778,994 305.288,375	17	406.858,441 305.277,633	80.17	17	406.858,441 305.277,633	18	406.900,378 305.272,686	42.228	18	406.900,378 305.272,686	19	406.951,629 305.261,542	52.449

Punct început	X / Y	Punct sfârșit	X / Y	Lungime segment	Punct început	X / Y	Punct sfârșit	X / Y	Lungime segment	Punct început	X / Y	Punct sfârșit	X / Y	Lungime segment
19	406.951,629 305.261,542	20	407.059,093 305.230,747	111.789	20	407.059,093 305.230,747	21	407.101,24 305.225,891	42.426	21	407.101,24 305.225,891	22	407.054,843 305.236,212	47.531
22	407.054,843 305.236,212	23	406.978,005 305.263,491	81.537	23	406.978,005 305.263,491	24	406.952,58 305.272,518	26.98	24	406.952,58 305.272,518	25	406.928,295 305.278,479	25.006
25	406.928,295 305.278,479	26	406.911,51 305.279,955	16.85	26	406.911,51 305.279,955	27	406.875,537 305.283,117	36.112	27	406.875,537 305.283,117	28	406.871,918 305.283,637	3.656
28	406.871,918 305.283,637	29	406.811,273 305.292,358	61.269	29	406.811,273 305.292,358	30	406.711,449 305.304,585	100.57	30	406.711,449 305.304,585	31	406.627,661 305.306,931	83.821
31	406.627,661 305.306,931	32	406.593,747 305.307,88	33.927	32	406.593,747 305.307,88	33	406.591,355 305.307,947	2.393	33	406.591,355 305.307,947	34	406.572,811 305.306,416	18.607
34	406.572,811 305.306,416	35	406.557,036 305.302,706	16.205	35	406.557,036 305.302,706	36	406.509,656 305.285,57	50.384	36	406.509,656 305.285,57	37	406.470,993 305.268,051	42.447
37	406.470,993 305.268,051	38	406.451,53 305.259,233	21.367	38	406.451,53 305.259,233	39	406.423,813 305.244,396	31.438	39	406.423,813 305.244,396	40	406.411,648 305.239,45	13.132
40	406.411,648 305.239,45	41	406.395,873 305.230,587	18.094	41	406.395,873 305.230,587	42	406.360,921 305.215,233	38.176	42	406.360,921 305.215,233	1	406.288,178 305.185,727	78.499

\*\* Lungimile segmentelor sunt determinate în planul de proiecție Stereo 70 și sunt rotunjite la 1 milimetru.

\*\*\* Distanța dintre puncte este formată din segmente cumulate ce sunt mai mici decât valoarea 1 milimetru.

